

Shape

your performance

| VMP | MES | CLINIC | PROCESS |




YOUR ALL-IN-ONE SOLUTION


To drive your operational performance

VMP

VISUAL MANAGEMENT FOR PERFORMANCE




- DMS** Animate your DMS
- KPI** Manage your performance
- OBEYA** Drive your projects
- PR** Solve your issues
- TODO** Drive your actions
- GEMBA** Check your standards
- FORUM** Realtime communication




MES

MANUFACTURING EXECUTION SYSTEM




- PLAN** Plan and et supervise your PO
- SKILLS** Manage your teams
- OEE** Supervise your shopfloor
- DOC** Control the workstation doc
- T&T** Monitor your process
- CONTROL** Store your controls
- CHECK** Check your standards

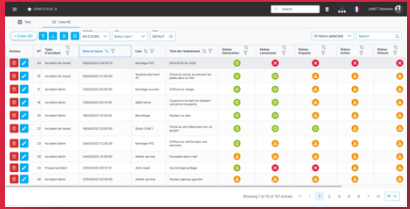


CLINIC

PROBLEM RESOLUTION




- AUDIT** Follow your audits
- FNC** Follow your non-quality
- 8D EXT** Manage customer 8D
- 8D INT** Manage internal 8D
- 8D SUPP** Manage supplier 8D
- WAIVER** Manager deviations
- LLC** Capitalize on experiences

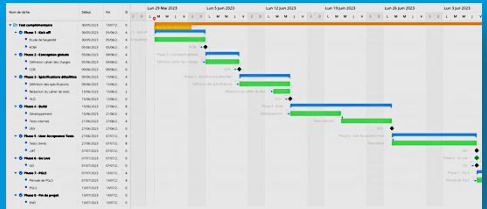


PROCESS

MANAGEMENT SYSTEM



- A3** Drive your strategical projects
- CARTO** Drive your process
- EDM** Manage your documentation
- FORMS** Nocode forms
- PROJECTS** Manage your projects (APQP/PPAP)
- SQL*** Drive your supplier's perf
*SQL = Supplier Quality Portal



VMP

The 4.0 manager's toolbox to create visualisation and animate your performance



- DMS** Animate your DMS
- KPI** Manage your performance
- OBEYA** Drive your projects
- PR** Solve your issues
- TODO** Drive your actions
- GEMBA** Check your standards
- FORUM** Realtime communication

PANO THE SOLUTION

NO CODE

> 40
WIDGETS

RESPONSIVE
ON ALL SCREENS

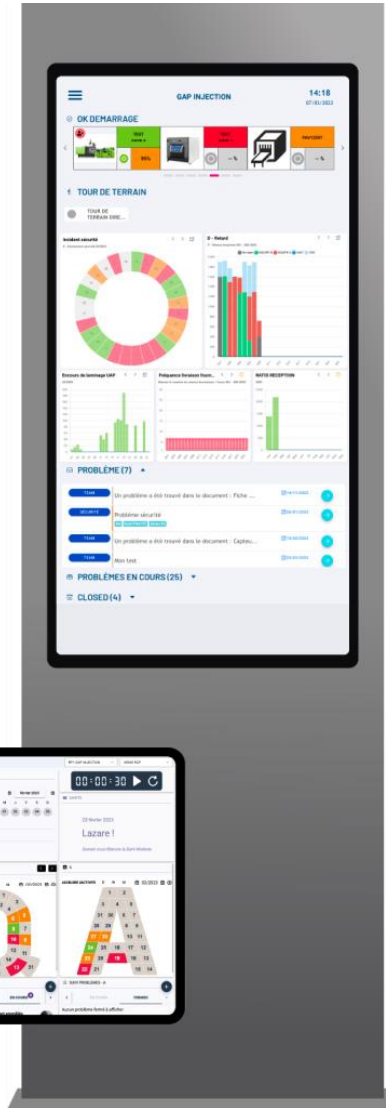
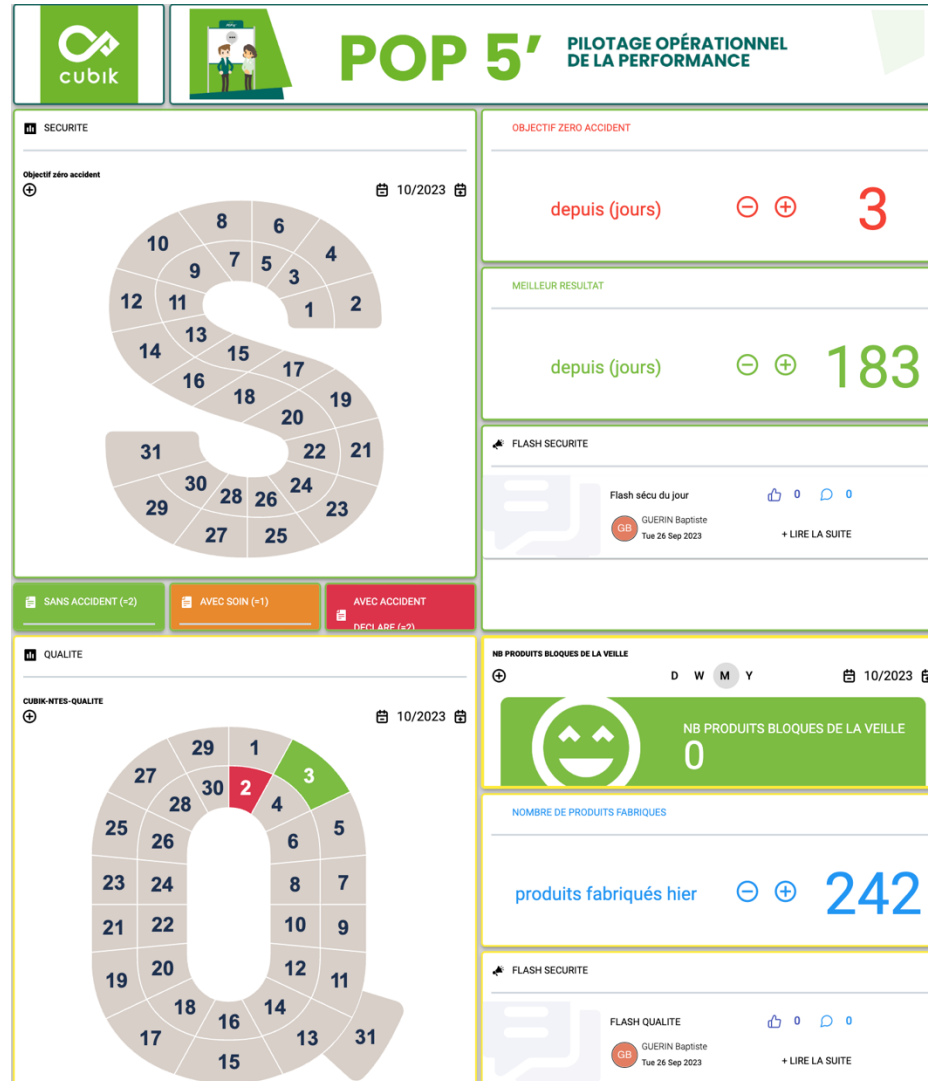
USER-FRIENDLY
&
SIMPLICITY

2''

TO SETUP

CONNECTIVITY
SI / MACHINE /
WORKSTATION

1 ANSWER
TO ALL YOUR
NEEDS



VMP

Customer experiences

SQCDP ZINC_FLOWER

IDEA

5 - PROTÉGER L'EFFECTIVITÉ | 6 - MAÎTRISER LA PRESTATION | 7 - AMÉLIORER L'EFFICACITÉ | 8 - ORGANISER L'ACTIVITÉ | 9 - COMPÉTENCE & MOTIVATION

Suivi des AT et SS | Suivi des réclamations | Historique Sinistres | Activité Début / NDD | Suivi nombre Absent

PBS SECURITE | PBS QUALITE | PBS EFFICACITE | PBS ORGANISATION | PBS PERSONNEL

DOTER LA SB A350 D'UN NOUVEAU LIPTOP | TESTER LE NOUVEL OUTILS DME AVANT DE | PARTAGER UNE BOITE MAIL PARTAGEE POU | DEMANDER L'AVANCEMENT D'ACHAT DU MAT | RELANCER L'ÉQUIPEMENT D'UN CRAYON SCA | SAVOIR EN RÉCEPTION FLOWER PAR OU DOVI | FAIRE LE POINT SUR LA PROPOSITION D'UN | ORGANISATION DE LA JOURNÉE DE SOLIDAI

BIENVENUE
mercredi 4 octobre 2023

Aujourd'hui le 4 octobre 2023, nous fêtons la Saint Fr. d'Assise!
Demain nous fêterons la Saint Fleur

00:19:00

RM 029 Le Mans Classic ...

Vrs : 500%
Conformité : 60%

AUDIT PROCESS 1/0 0/1
AUDIT SPOT SS 1/0 1/0
SAFETY WALK 1/0
TOUR DE TE...IN DU 1/0

SECURITE

INCIDENT SECURITE / KPI 1 06/2023

QUALITE

AD - INCIDENT QUALITE 06/2023

PRODUCTION

TRS LOCOMOTIVE 05/2023

BIENVENUE
mercredi 4 octobre 2023

Aujourd'hui le 4 octobre 2023, nous fêtons la Saint Fr. d'Assise!
Demain nous fêterons la Saint Fleur

00:19:00

SECURITE

Parcels problèmes

QUALITE

FACTORY_PARETO DE PROBLEMES

PRODUCTION

HEURES PROD 50

SUIVI PROBLEMES HSE

BOBO AU DOIGT LORS DU CHANGEMENT DE BAR (133 days) HSE
CHOC À LA TÊTE LORS DU MONTAGE DU PORTE (133 days) HSE
UN PROBLÈME A ÉTÉ TROUVÉ DANS LE DOCUME (117 days)
C'EST PAS TOP ! (34 days) BUG

SUIVI PROBLEMES QUALITE

JE N'AI PLUS DE PAPIER SUR MON POSTE (4 days)

SUIVI PROBLEMES PRODUCTION

STOP OF PRODUCTION FOR MISSING TOOL (119 days)
PANNE DE MOTEUR (117 days)
IL MLABNQUE UN BAC (27 days)
FRÉDÉRIC N'A PAS MAPPY SUR SON TÉLÉPHON (6 days)

BIENVENUE
mercredi 4 octobre 2023

Aujourd'hui le 4 octobre 2023, nous fêtons la Saint Fr. d'Assise!
Demain nous fêterons la Saint Fleur

00:19:00

SECURITE

Parcels problèmes

QUALITE

FACTORY_PARETO DE PROBLEMES

PRODUCTION

HEURES PROD 50

SUIVI PROBLEMES HSE

BOBO AU DOIGT LORS DU CHANGEMENT DE BAR (133 days) HSE
CHOC À LA TÊTE LORS DU MONTAGE DU PORTE (133 days) HSE
UN PROBLÈME A ÉTÉ TROUVÉ DANS LE DOCUME (117 days)
C'EST PAS TOP ! (34 days) BUG

SUIVI PROBLEMES QUALITE

JE N'AI PLUS DE PAPIER SUR MON POSTE (4 days)

SUIVI PROBLEMES PRODUCTION

STOP OF PRODUCTION FOR MISSING TOOL (119 days)
PANNE DE MOTEUR (117 days)
IL MLABNQUE UN BAC (27 days)
FRÉDÉRIC N'A PAS MAPPY SUR SON TÉLÉPHON (6 days)

EXAMPLES WELCOME PAGE ENTERPRISE

MES

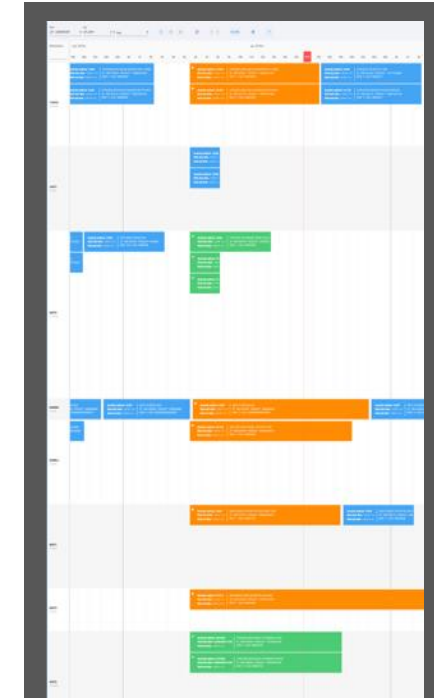
Connexion to workstations and production machine for realtime management



- PLAN** Plan and et supervise your PO
- SKILLS** Manage your teams
- OEE** Supervise your shopfloor
- DOC** Control the workstation doc
- T&T** Monitor your process
- CONTROL** Store your controls
- CHECK** Check your standards

QUANTITÉ OF 456/1800
DATE DE FIN D'OP 5 oct. 2023 10:21
TRS 93.0 %
REBUTS 0.0 %
04/10/2023 11:26:31

EQUIPE	PROGRESSION	OBJECTIF	PRODUIT	BONNES	REBUTS
06h00		114	0		
07h00		118	62	62	0
08h00		118	116	116	0
09h00		118	118	118	0
10h00		118	116	116	0
11h00		118	52	52	0
12h00		118	0		
13h00		118	0		
14h00		118	0		



CONNECT Smartlink i4



CLINIC

QSE toolbox



- AUDIT** Follow your audits
- FNC** Follow your non-quality
- 8D EXT** Manage customer 8D
- 8D INT** Manage internal 8D
- 8D SUPP** Manage supplier 8D
- WAIVER** Manager deviations
- LLC** Capitalize on experiences

LIENS UTILES > Search [] JAMET Sebastien

Test Liste NC

+ Créer 8D [] [] [] [] Archives Lieu Vues

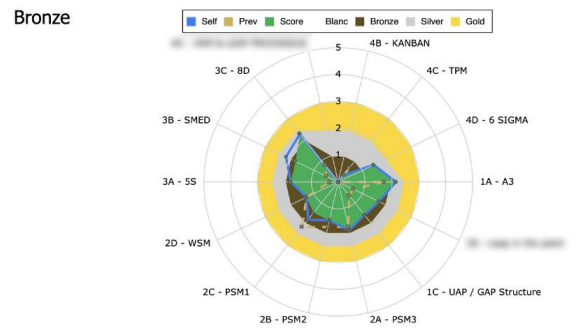
EN COURS Select item * DEFAUT 10 items selected Search []

Actions	N°	Type d'accident	Date et heure	Lieu	Titre de l'évènement	Status Déclaration	Status Lancement	Status Enquete	Status Action	Status Cloture
[] []	43	Accident de travail	06/03/2023 09:00:10	Montage PVC	DOULEUR AU DOS	○	✗	✗	✗	✗
[] []	19	Accident de travail	05/04/2023 21:40:00	Soudure dormant 4T	Chute au sol en se prenant les pieds dans un filin	○	○	△	△	△
[] []	21	Accident bénin	12/04/2023 20:30:00	Montage ouvrant	Griffure au visage	○	○	△	△	△
[] []	18	Accident bénin	13/04/2023 20:15:00	débit tekna	Coupure à la main en utilisant une pince coupante	○	○	△	△	△
[] []	20	Accident bénin	19/04/2023 10:34:00	Barretage	Douleur au dos	○	○	△	△	△
[] []	22	Accident de travail	19/04/2023 23:50:00	Stock CAIB 1	Chute au sol trébuchant sur un goujon	○	○	○	△	△
[] []	23	Accident bénin	24/04/2023 12:30:28	Montage PVC	Griffure au ventre avec une parclose	○	△	△	△	△
[] []	29	Accident bénin	24/04/2023 15:30:00	Atelier service	Poussière dans l'œil	△	△	△	△	△
[] []	24	Presqu'accident	27/04/2023 15:30:00							
[] []	28	Accident bénin	27/04/2023 15:30:00							



Audit grille maturité

Famille	Self	Prev	Score	OFI (Opp)
1 - Organization				
1A - A3	2.2	1.75	2.2	0
1B -	1.71	0.63	1.71	1
1C - UAP / GAP Structure	1.6	0.67	1.6	0
2 - Operational management				
2A - PSM3	1.88	1.75	1.88	2
2B - PSM2	1.5	1.75	1.5	2
2C - PSM1	1.83	2.2	1.5	5
2D - WSM	1.33	1.33	1.33	2
3 - Basics process improvement				
3A - S5	1.8	0.33	1.8	2
3B - SMED	2.2	0.5	1.8	0
3C - 8D	2.33	0.8	2.33	2
4 - Advanced process improvement				
4A -	0	0	0	0
4B - KANBAN	0	0	0	0
4C - TPM	0.33	0.67	0.33	0
4D - 6 SIGMA	1.5	0	1.5	0



PROCESS

PROCESS & PROJECTS MANAGEMENT



A3 Drive your strategical projects

CARTO Drive your process

GED Manage your documentation

FORMS Nocode forms

PROJETS Manage your projects (APQP/PPAP)

SQP* Drive your supplier's perf

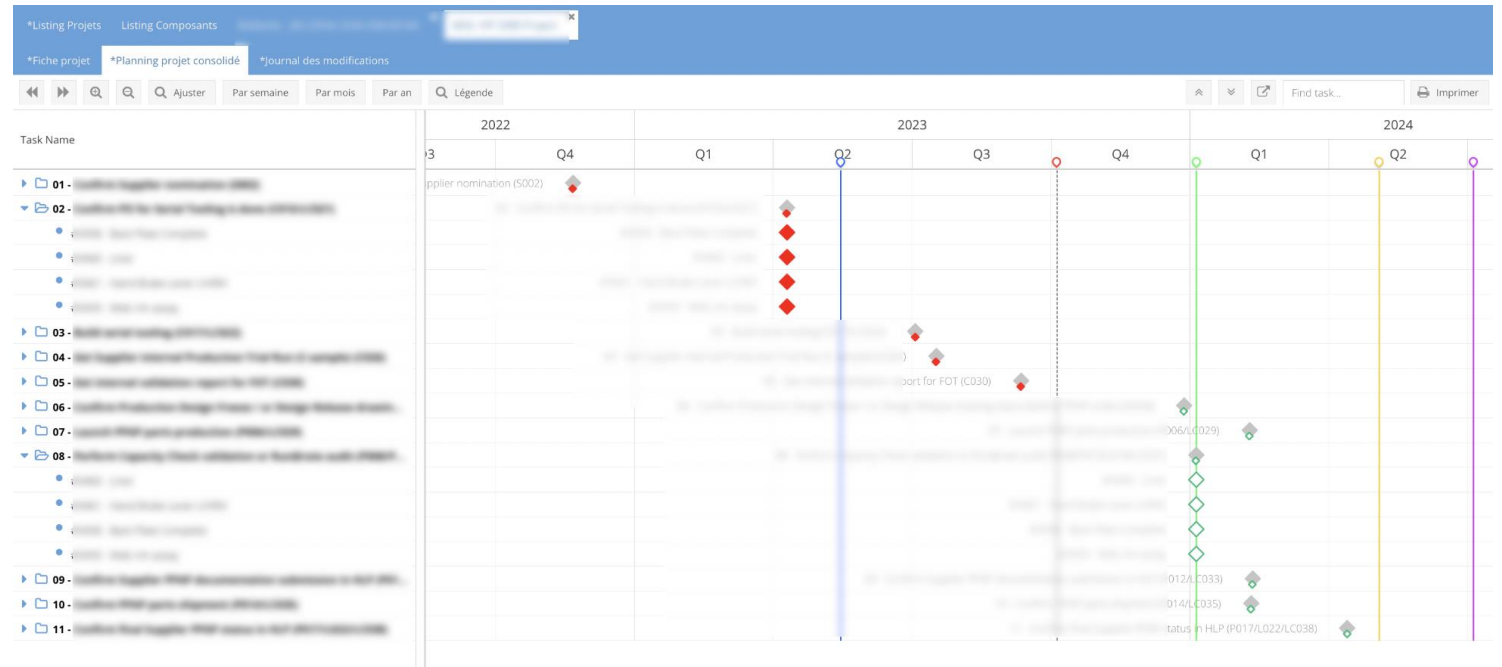
*SQP = Supplier Quality Portal



Liste des projets

+ Ajouter un projet | Tout voir | Projets en cours | Advanced search | Clear preferences | Cette semaine | Sous 30 jours | From | To | Exportation Excel

#	Client	Référence LISI	Chef de projet	Site de production	BG	Cotation du risque	Désignation pièce	J1-120 Gate 1: KOM	J2-260 Gate 2: GEC	J3-180 Gate 3: DEC	J4-160 Gate 4: PPAP	Gate 5: TMR	Gate 6: QCR
1141A						1 - 15		25/10/2021	22/11/2021	11/07/2022	17/05/2022	02/11/2022	26/01/2023
1091A						2 - 8		24/06/2021	07/07/2021	21/07/2021	04/05/2022	30/03/2023	22/06/2023
978A						1 - 9		06/04/2021	06/04/2021	06/04/2021	06/04/2021	13/03/2024	09/12/2024
954A						2 - 7		11/01/2021	08/02/2021	22/03/2021	30/06/2021	04/07/2023	25/11/2022
770A						2 - 11		08/10/2020	25/02/2021	25/02/2021	22/09/2021	20/04/2023	12/07/2023
596A						1 - 9		24/02/2020	24/02/2020	24/02/2020	03/06/2020	31/08/2020	26/01/2021



THEY TRUST US

They use **MAPPSY** :

ACCSYS	ALSTOM	APS COATING	ARCELORMITTAL		
AVIA GROUP	BAUD INDUSTRIES	BOMBARDIER			
BOURGEOIS PLASTIQUES	BOMBARDIER	CITELE	CUBE		
DONZE BAUME	FUJI AUTOTECH	GFP	IDEA GROUP	IUT NANTES	
LEGENI	LINAMAR	LISI	JESA	JTEKT	MARCEL INDUSTRIES
MATTERNLAB					
METALIS	NOVARES GROUP	NTN-SNR	PARROT	PMISI	HITACHI
NP SYNTEX	RAFAUT	RICHEMONT	SEGULA	SUDELEC	SWARM
TECH POWER	THIERRY SA	UIMM	VALGINE	VOSSLOH	WIBAIE

● HLP plants





**#TEAM INFRA &
INFOTRONICS**

**#BUSINESS
CONSULTANTS**

OUR SERVICES

A product and service offer for a
successful transformation from A to Z

**#SLA SUPPORT
AGREEMENT**

**#MULTILANGUAGE
PLATFORM**

**#DATA CENTER /
ON PREMISE**

“A team of transformers, integrators and developers
dedicated to your performance”

**#ONE INSTANCE
PER CUSTOMER**

#0 LATENCY

**#APPS IOS /
GOOGLE PLAY**

**#FULL
PROTOCOLS**

#MATERIAL

CONNECT the smartlink i4



- **Swissmade by LCB sàrl**
- All PLC protocols:
EUROMAP, PROFINET, OPCUA, FINS, MODBUS,
TCP, FTP and custom
- RJ/WIFI/BLUETOOTH/USB/RS232/485
- SEC / IO / IOT contact...

VIEW terminal

- **Made in France by HLP**
- 2000x650x300
- Metal or plastic
- Customizable
- Wi-Fi connection 6
- Full apps MAPPSY
- MDM connect



Devices

A range of dedicated products for every need

CONTROL devices

A selection of the best devices dedicated to hostile environments

OPERATOR TABLET



SMARTPHONE
MANAGER



HOLOLENS



LARGE TOUCHSCREEN



NETWORK

We support you to deploy and secure your machine network

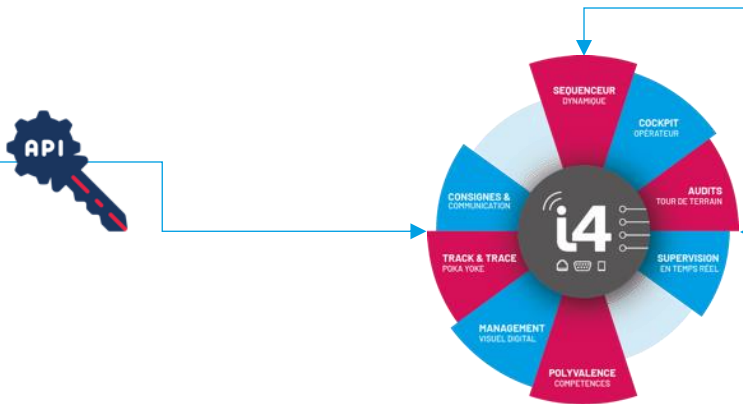
MOXA
Industrial Network Solution

elo

DIAGRAM



PO / ARTICLES / BOM / CYCLE TIME / USERS....



- PACEBOARD
- OK START
- SKILLS
- DOCUMENTS
- PROBLEMS / NC
- AUDIT



CONNECTIVITY

- RJ45
- RS 232/485
- IO (Dry contact)

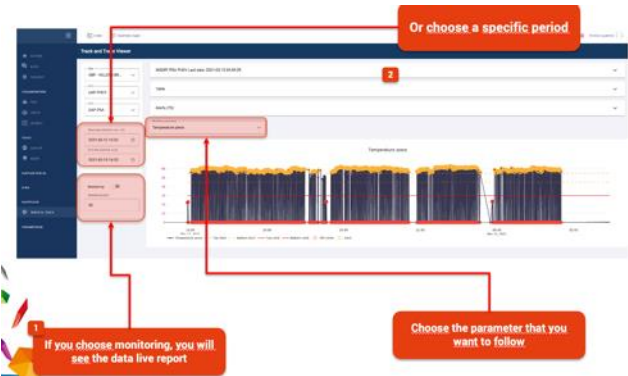


PROTOCOLS

- EUROMAP 63/77
- OPCUA
- Fins
- Modbus...
- mpulsion

Connexion IN/OUT :

- CYCLE & DATAS



CUSTOMERS EXPERIENCE

LARGE COMPANY

ALSTOM-BOMBARDIER, historical customer since 2010, the solution is considered in the TOP 3 applications (SAP, BI, HLP).

Key points :

High interconnexion with the SI :

- SSO
- SAP IN/OUT in realtime
- KPI upload in Qlik
- Data warehouse connexion for all master data
- Supplier account management via internal IAM



KEY FIGURES

- 365 productions plants
- 10 000 internal users
- 30 000 external users
- 2,5To shared files
- 1M transactions per day

CUSTOMERS EXPERIENCE

LARGE COMPANY

NOVARES use MAPPSY since 2020 in three scopes:

DIGITALIZATION for real-time workshop supervision: Paceboard (TRS, scrap, machine shutdowns)

- Management of OK starts centralized for all production plants
- Automated rights attribution regarding NOVARES users's directoy
- Sequencer interfaced with SAP and automatically made available to operators

TRACK & TRACE

- Monitoring of influents process parameters by unit part or batches
- Poka Yoke system: control of machine operations upstream for fault detections

POKA LABEL

- Monitoring the part packaging process on testing and assembly machines
- Printing labels in the correct format from SAP (ETi9 format)



KEY FIGURES

- 50 productions plants
- 15 000 internal users
- 400 connected i4 boxes
- 5 500 fabrications order followed in production

CUSTOMERS EXPERIENCE

LARGE COMPANY

ARCELORMITTAL CONSTRUCTION has initiated a process of transforming managerial and industrial practices thanks to MAPPSY since 2021 :

Key points :

- The DMS are digitalized and carried out every day on the DR totem with performance monitoring across the whole site (30 rooms)
- Monitoring of QUICK KAIZEN & KAIZEN improvement projects on the tool
- Digitalization of “World Class Manufacturing” (LEAN approach)
- Dynamized communication flow via the publication of information on totems in shopfloor and strategic points (entrance hall, etc.)



ArcelorMittal

KEY FIGURES

- 23 production plant
- 200 users
- 600 OK starts per month
- 160 KPIs followed

CUSTOMERS EXPERIENCE

LARGE COMPANY

IDEA LOGISTIQUE implemented MAPPSY in 2022 to digitalize its entire operational excellence system

Key points :

- The operator paceboard and our i4 box have been customized to allow real-time monitoring of high-cadence rotation speeds.
- The instructions are recorded by voice by the operators directly on the tablet.
- All control routines are carried out on our touchscreen terminals with management panels designed by the customer.



KEY FIGURES

- 39 productions plants
- 1 000 internal users
- 190 strategicals projects
- 44 management rooms
- 100 digitalized management panels

CUSTOMERS EXPERIENCE

LARGE COMPANY

MAPPSY deployed on the entire scope of **LISI** : Group, Automotive, Aerospace, Medical



Key points :

- SSO multi-directories
- Multi-ERP interfacing and consolidation according to divisions.
- The implementation of tools has enabled standardization of practices between divisions

KEY FIGURES

- 43 productions plants
- 4 500 internal users
- 10 000 workshops successfully completed

CUSTOMERS EXPERIENCE

LARGE COMPANY

HITACHI ASTEMO (ex-Chassis Brakes International scope) dedicated to supplier performance. It is used today as an example for all HITACHI ASTEMO group (in discussion for group implementation)



Key points :

- Direct interconnection with SAP for quality incidents and SAP tablets for logistics incidents.
- Automatic injection of components into APQP folders
- Automatic generation of audit schedules based on consolidated data from the HITACHI platform and external tools
- Connection of external and internal users from the HITACHI purchasing portal

KEY FIGURES

- 21 productions plants
- 600 internal users
- 1 000 components followed in APQP
- 7 000 FAI / PPAP projects validated
- 11 000 products monitored for requalification every year independently by suppliers

Equipment manufacturer hlp...



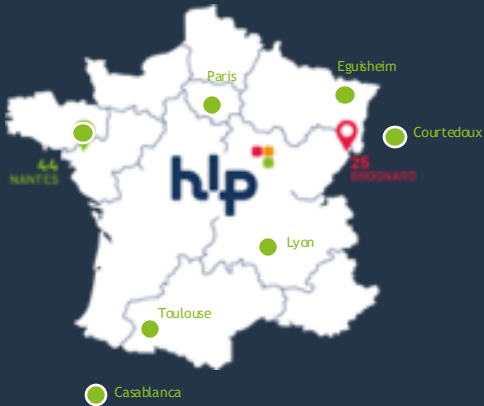
+ than 1,000 customers
supported in 25 years




600,000 users
connected in more than 3,500 factories
on five continents



+ de 300 factories
connected and controlled in real time



36 
SALES : 4 M€
CREATION ; 1999



Our reason for being
Develop your performance sustainably

Our strength
Equipment supplier in 5.0 transformation

Our engagements
Proximity, responsiveness, listening and innovation

OUR SCOPE OF EXCELLENCE



CONSULTING & TRAINING

Diag, advice, support and training

- Operational effectiveness
- Extensive digitalization
- Industrial organization
- QSE management

RESSOURCES

- 15 consultants in operational excellence and digital integration + 80 externals integrators
- 5 trainings DOJO : Paris, Lyon, Nantes, Toulouse & Montbéliard (headquarter)



DIGITAL

Software editor of the digital performance management solution MAPPSY

- Visual management for the performance
- Problems resolution
- Process management

RESSOURCES

- 12 project manager and developer engineers
- Certified cybersecurity data center
- Integration team SAAS ODOO / ZEEN



FACTORY

Design and production for industry 5.0

- Workstation organization
- Visual management
- Visitability
- Accessories

RESSOURCES

- 1000 m² production shopfloor
- 12 numeric machines : large format printing, 3D printing, milling, cutting, folders, embroiderers, punching machines, etc.
- 24,000 referenced products

OUR ESTABLISHMENT

HO

HLP SERVICES

1000, allée HENRI HUGONOT
25600 BROGNARD
03 81 91 56 35
contact@hlp.group

PLANT

HLP | GRAND EST

Bertrand HUSSON
06 17 59 10 24
Bertrand.husson@hlp.group

BRANCHS

HLP NANTES

116 Rue de l'aviation
44340 BOUGUENAIS
sebatien.jamet@hlp.group

HLP MAROC

Tit Mellil
20000 CASABLANCA
maroc@hlp.group

Nos partenaires exclusifs :



Cubik Partners : Paris, Nantes, Lyon, Toulouse



LCB sàrl : Courtedoux (Swiss),



References

ADAPEI DU DOUBS	DDLG	GROUPE V	MACPLUS	POCLAIN	SVMS - GROUPE EUROVIA
ADHEX TECHNOLOGIES	DE BONI	HITACHI - ASTEMO	MAGNA	PORCHER	SYNEDRIA
ADLER - Groupe PELZER	DECOVISION	HOMMES & METHODES	MAIKE AUTOMOTIVE	PRECIJURA	TENTE
AIRBUS	DÉFI	HOPITAL NORD FRANCHE COMTE	MALAKOFF CHOCOLATS	PROMAN	THIERRY SA
ALSTOM	DELFINGEN	HOTEL B & B	MANDRILLON	PROTALIA	THYSSENKRUPP PLASTIC
AMPHENOL FCI	DICEP EMC	HUTCHINSON	MANPOWER	PSA	TITAN AVIATION
APERAM	DONZE BAUME	ICA	MANTION	R. BOURGEOIS	TOTAL
APHP	DP PLAST	ICONES	MAQPRINT	RAPALA	TPE GROUP
APS COATING	DS SMITH	IMASONIC	MATY	RATP	TRIOPTIQUAL
ARCELORMITTAL	EAU VIVE	IMPRICLUB	MBDA MISSILE SYSTEMS	RENAULT	TSM
ATELIERS BUSCH	Ecole de production de Besançon	IMPRIMERIE DE L'EPERON	MBP	REYDEL	TWC L'AMY
ATHEO	EDUCATION NATIONALE	IONISOS	MC DONALDS	RICCOBONO	UIMM
AUTOKABEL	ELECTROGELOZ	ISA FRANCE	MDDE	RICHARD MILLE	UNT
AVIA INDUSTRIES	ELECTROLYSE ABBAYE D'ACEY	ISIPRINT	MECA SERVICE	ROSSIGNOL	VALESSENTIA
BASF	ESCOURBIAC	ITW	MECACHROME	ROTATHEAM	VALGINE
BAUD INDUSTRIES	ESDI	IUT DE NANTES	MECAPLUS	RVE	VARINOR SA
BOURGEOIS PLASTIQUES	EST IMPRIM	IXBLUE	MEGGITT AVIONICS	SAFEN AEROLOG	VAUTHERIN SARL
BOURGUIGNON BARRE	ESTA	JETLAQUE	MERCEDES -BENZ	SAINT JEAN INDUSTRIES	VECATEL
C&K COMPONENTS	FABER	JINGJIANG	METALHOM	SANDE N	VERPILLAT
CAIB - Groupe LIEBOT	FAURECIA	JOHN DEERE	METALIS	SCHRADER PACIFIC	VETOQUINOL
CEGELEC	FC SOCHAUX	JTEKT	METALOR	SCODER	VIBRA COUSTIC
CEMODECOVISION	FIBERWEB FRANCE SAS	JURA MODELISME	MONTUPET SA	SERIAL ETIC	VMC PECHE
CETIM	FIDELA	JURALUX	MPLUS GROUP	SESAME SA	VOESTALPINE
CFF - CHEMINS DE FER FEDERAUX SUISSE	FISCHERS CONNECTORS SA	JUSSIEU SECOURS	NAVAL GROUP	SHARP	VOSSLOH
CGR	FLEX N GATE	KNAUF	NEOCENTER	SICPA SA	VUILLET VEGA
CHEVAL FRERES	FOGEPACK	LABORATOIRE SERVIER	NEOLIA	SICTA FRANCE	WAGNER
CHU DIJON	FORGITAL FMDL	LAGARDES AUTOCLAVES	NOVARES	SIMU	WALTE FAUGLE
CITILE GROUP	FSP ONE	LATECOERE	NOWAK	SMITHS DETECTION	WKDA France
CLC LOISIRS	FUJI AUTOTECH	LAUENER DECOLLETAGE	NP SIMONIN	SMMO	WURTH
CLEXTRAL	GALVANOPLAST	LCB	NTN SNR	SNCF	ZODIAC
COBHAM	GASTON ROZE	LE DECOLLETAGE JURASSIEN	OPCO 2i	SNOP	ZURFLUH FELLER
COFIDUR EMS	GAUSSIN	LEGENI	OPSAT	SNWM	
COLAS RAIL	GE	LISI	OVEUS	SODIMAV	
COTHERM	GEODIS	LOCAM	OXYBIS	SOFRADI	
CREDIT AGRICOLE	GFP	LOGISTICS OPERATIONS	PARROT SA	SOGESCO	
CRESILAS	GROSPERRIN	LUCAL	PEUGEOT JAPY TECHNOLOGIE	SOMFY	
CRISTEL	GROUPE CUBE	LUNETIERS DU JURA	PEUGEOT MOTOCYCLES	SOPIL SA	
CUISILINE	GROUPE IDÉA	Lycée Bartholdi	PIC 25	STATICE	
DAHER	GROUPE MAILLARD INDUSTRIES	Lycée COUFFIGNAL	PIERRE FABRE	STICIMAGE	
DANGEL	Groupe POURPRIX	LYRECO	PLANET CARDS	STUDER SA	
DCM PRECISION		MABI	PMISI	SUPERFOS	



**Generate the idea,
spark, challenge
and formalize the need
constitutes our first added value.**

HEADQUARTER

Jérôme ALACIO
06 48 07 92 73
jerome.alacio@hlp.group

WEST

Sébastien JAMET
02 40 05 35 76
sebatien.jamet@hlp.group

EAST

Bertrand HUSSON
06 17 59 10 24
bertrand.husson@hlp.group

AURA

Hugues GRANIER
06 84 28 67 30
hugues.granier@hlp.group

SWISS

David MAITRE
00 41 32 466 16 15
david.maitre@lcb-info.ch

MORROCO

Khalid LAMLIH
00 212 661 57 41 28
khalid.lamlih@hlp.group