



Geographic Information Systems

Topographic and Thematic Cartography

Territorial Planning

Carbon Capture



Portfolio

2024



1 PORTFOLIO

The USE Concept, Lda is a consultancy, study and research company in aspects such as spatial planning and planning, geographic information systems (GIS) and cartography. He has in his *curriculum* the following studies and/or projects:

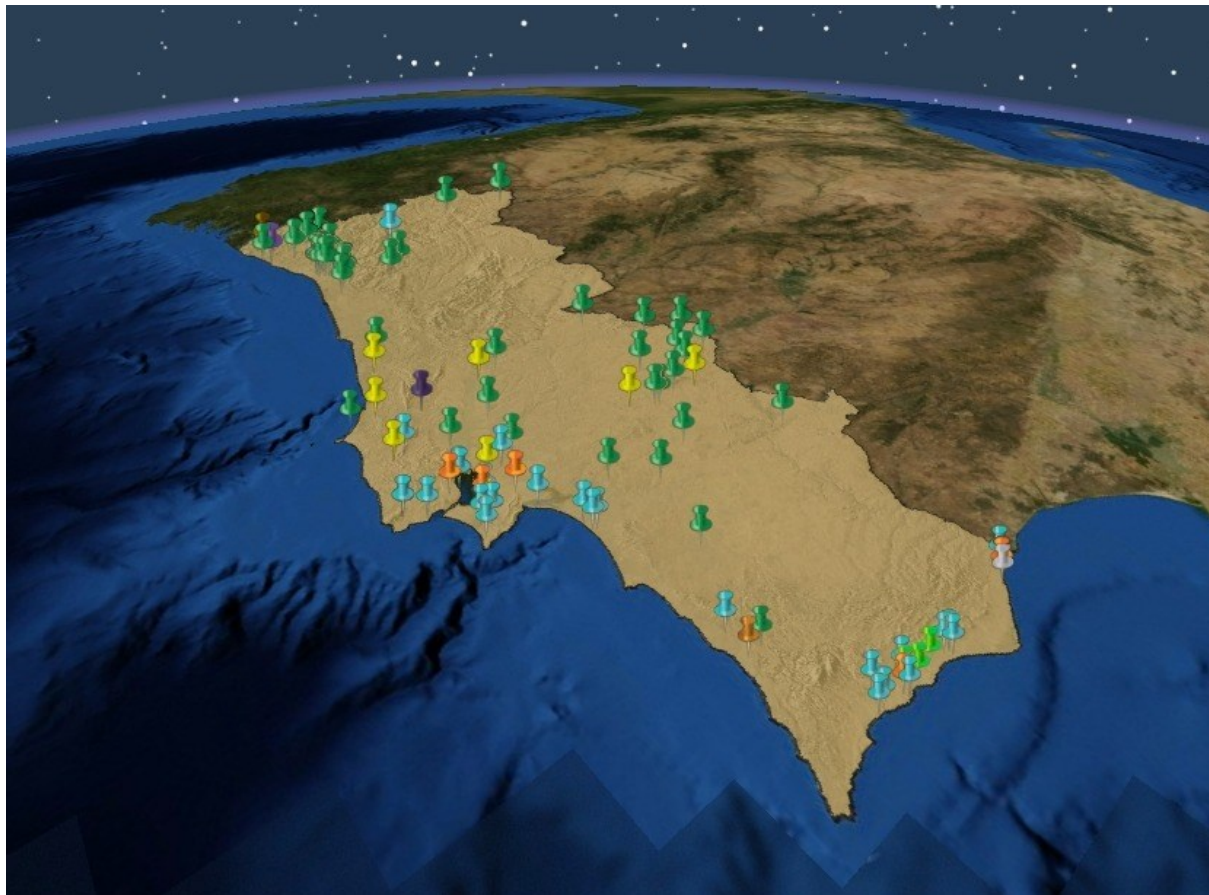
- **Topographic surveys** using classical topography and aerial photogrammetric methods, in the private and public sectors.
- Execution and updating of **vector topographic cartography**.
- Preparation, monitoring and submission of the **homologation process of vector topographic cartography** to the Directorate-General for the Territory (DGT), in accordance with the Standards and Technical Specifications in force.
- Technical consultancy in Geographic Information Systems (GIS) in the Environmental **Impact Studies (EIA) component**.
- Coordination of the **Revision of the Municipal Master Plan** and complementary studies of the municipalities of **Arraiolos** and **Redondo**.
- Technical consultancy in GIS within the scope **of the MIP Review**.
- Technical consultancy in the scope of the delimitation of REN – **National Ecological Reserve**.
- Consulting in **GIS Process Reengineering**.
- Collaboration with the Instituto Superior Manuel Teixeira Gomes of the Lusófona Group, within the scope of the development of the **Post-Graduation course in Risks, Planning and Civil Protection**, between 2014 and 2016.
- Collaboration with the Municipality of **Amadora** for the International Campaign "**Making Cities Resilient 2010-2015**" of the United Nations International Strategy for Disaster Risk Reduction.
- Technical consultancy in GIS within the scope of **EIA** , with the main emphasis on the EIA of the Connection to the National Electricity Transmission Network, at 400 kV, of the Foz Tua Hydroelectric Power Plant for EDP – Energias de Portugal (2013-2014).
- **Iterative GIS platform (WebSIG)** on the Óbidos lagoon, based on open data and Landsat satellite images for the Tourism Research Unit (GITUR) of the School of Technologies and Sea (ESTM) of the Polytechnic Institute of Leiria, in 2014.
- Technical consultancy in GIS within the scope of the **Cadastral Survey of Sanitation and Supply Infrastructures of the District of Évora** for the Intermunicipal Community of Central Alentejo (CIMAC), in 2013.



- Technical consultancy in the context of the processes that gave rise to the current **National Territorial Information System** (SNIT), for the Directorate-General for Spatial Planning and Urban Development (DGOTDU), between 2010 and 2012, with participation in the following projects:
 - Process Reengineering;
 - Survey of Territorial Information;
 - Territorial Information Quality Assurance Plan;
 - System for Automatic Submission of Territorial Management Instruments (SSAIGT) .
- Development of **training courses in GIS and Remote Sensing**, in collaboration with ESRI Portugal.
- Development of **Training Intervention Plans**, with Portuguese municipalities, in collaboration with the CEFA Foundation – Municipal Studies and Training.

2 GEOGRAPHICAL DISTRIBUTION OF PROJECTS IMPLEMENTED

We present the geographical distribution of the projects carried out by the USE team.



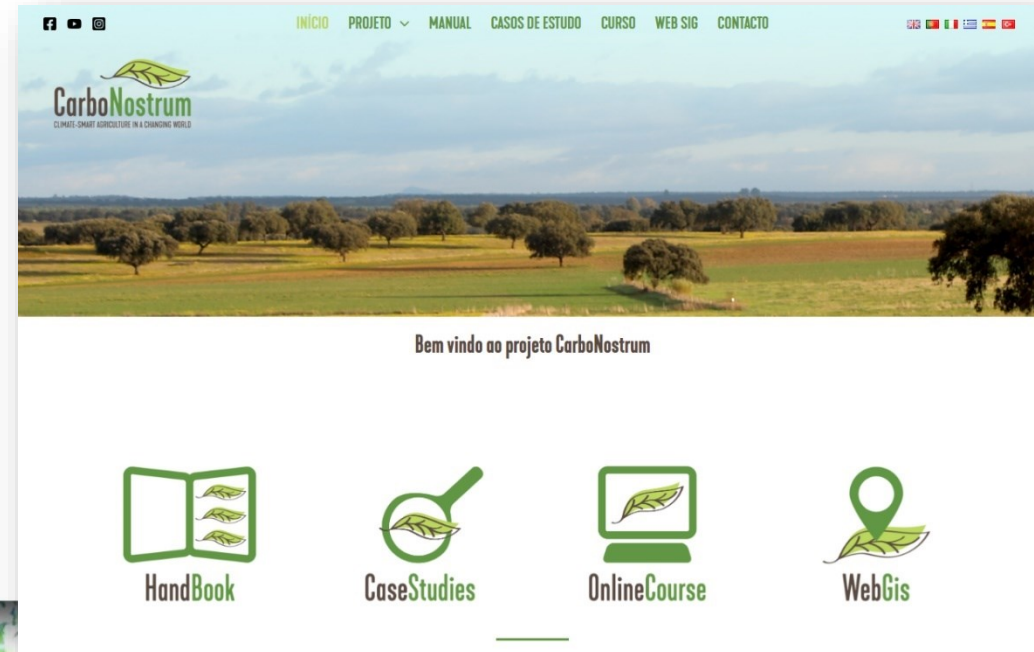
-  Agricultura
-  Ambiente
-  Arquitetura
-  Energia
-  Indústria
-  Infraestruturas e Equipamentos
-  Ordenamento do Território
-  Projetos Marítimos
-  Transportes
-  Turismo

3 EXECUTED PROJECTS - We present some of the projects executed by the USE team.

Coordination of the European project **CarboNostrum**

Erasmus + : 2021-1-PT01-KA220-VET-000033188

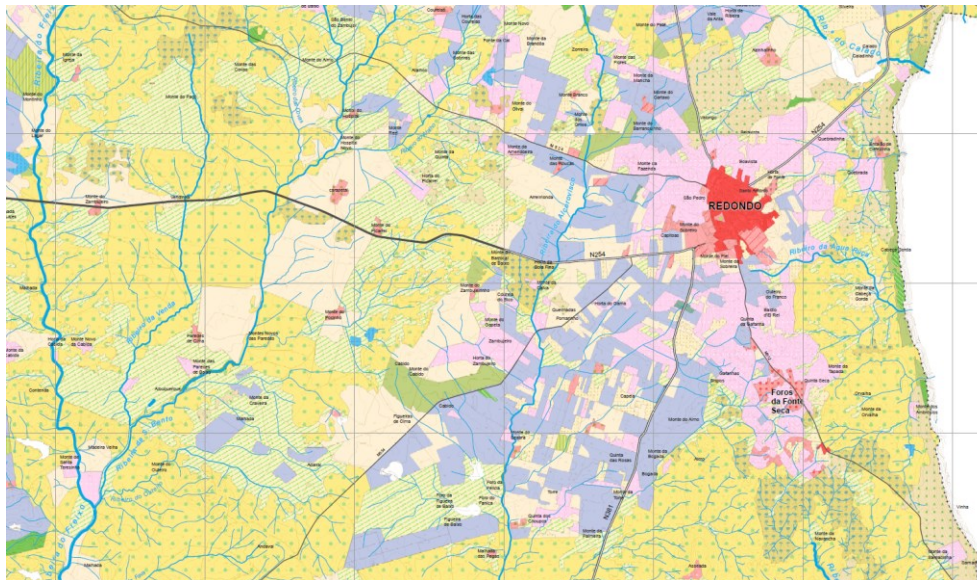
The main objective of the project is to develop a CarboNostrum HUB with training resources, tools and knowledge to be able to apply climate change mitigation and adaptation solutions in the poorest and most degraded lands of Mediterranean ecosystems.



REVISION OF THE MUNICIPAL MASTER PLAN (PDM) OF THE MUNICIPALITY OF REDONDO.

developed by The USE Concept, Lda.

The revision of the Municipal Master Plan of Redondo consists first of all of the Characterization and Diagnosis Studies, including the proposal for the scope of the Strategic Environmental Assessment, followed by the Plan Proposal and respective environmental assessment.



Intervention area

36,800.00 ha

Client

Município de Redondo

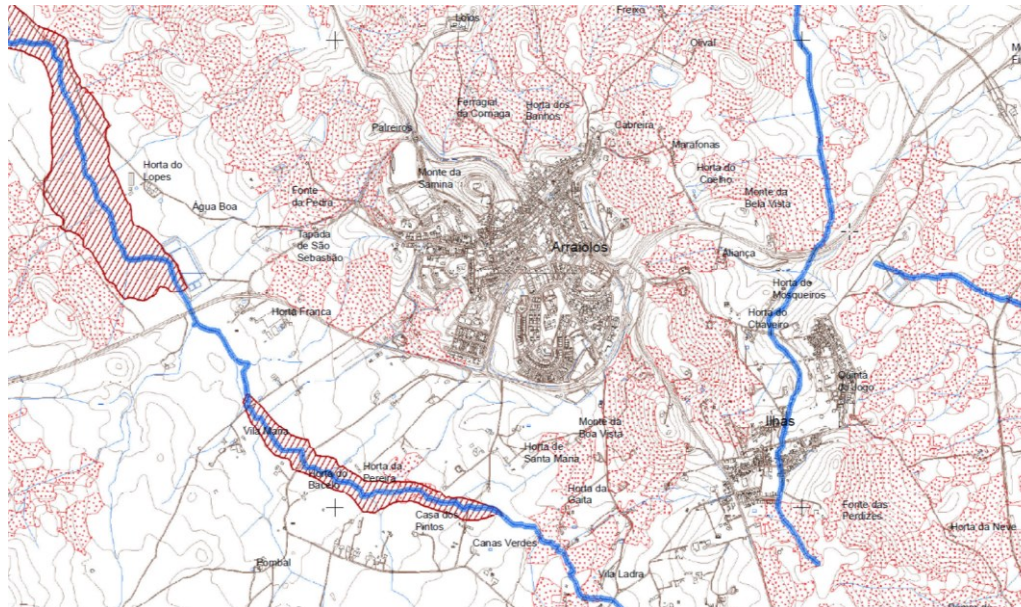
Date

2018 | 2023

REVISION OF THE MUNICIPAL MASTER PLAN OF THE MUNICIPALITY OF ARRAIOLOS.

developed by The USE Concept, Lda.

The revision of the Municipal Master Plan of Arraiolos consists first of all of the Characterization and Diagnosis Studies, including the proposal for the scope of the Strategic Environmental Assessment, followed by the Plan Proposal and respective environmental assessment.



Intervention area

68,400.00 ha

Client

Município de Arraiolos

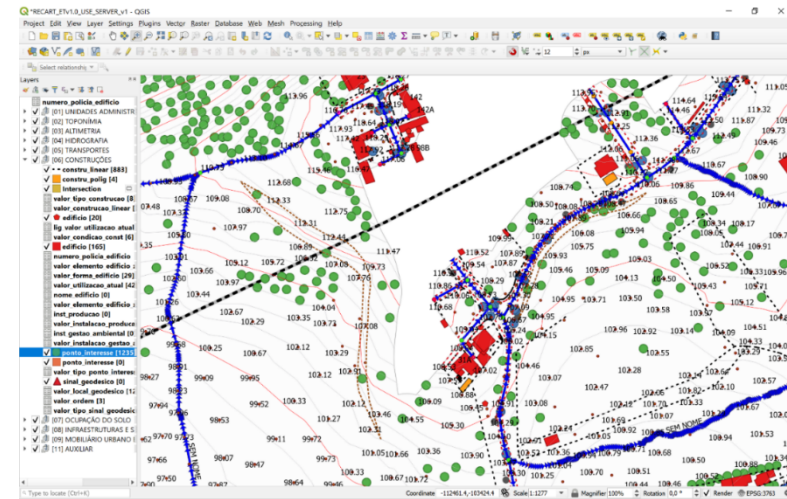
Date

2015 | 2023

EXECUTION OF VECTOR TOPOGRAPHIC CARTOGRAPHY FOR HOMOLOGATION

developed by The USE Concept, Lda.

Execution of vector topographic cartography, by classical topography methods and using conventional flight or drone, for the purpose of approval by the Directorate-General for the Territory (DGT).

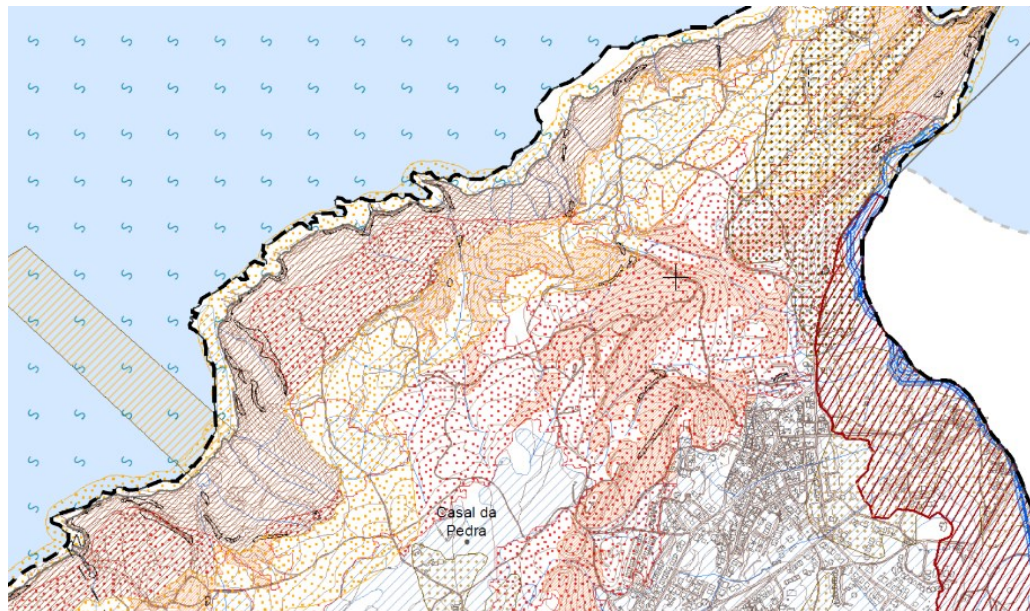


ID do Requerimento	Entidade Requerente	Identificação do Processo	Terminado Em ↓	Produtor	Proprietário	Sistema de Georreferência	Especificação dos Dados	Escala
5155	The USE Concept, Lda.	Cartografia Topográfica Vetorial, com Nível de Detalhe 1 (NdD1), para o PP de Lagos	2023-02-16	The USE Concept, Lda.	Mercan Properties Marina, Lda	PT-TM06/ETRS89	CartTop	CartTop NdD1
5057	The USE Concept, Lda.	Cartografia Topográfica Vetorial, com Nível de Detalhe 1 (NdD1), para a Herdade Morgado de Arge.	2022-05-24	The USE Concept, Lda.	GRAVITY INTUITION, S.A.	PT-TM06/ETRS89	CartTop	CartTop NdD1
5051	The USE Concept, Lda.	Cartografia Topográfica Vetorial, com Nível de Detalhe 1 (NdD1), para a povoação de Ilhas.	2022-02-07	The USE Concept, Lda.	Câmara Municipal de Arraiolos	PT-TM06/ETRS89	CartTop	CartTop NdD1
785	The USE Concept, Lda.	Atualização da Cartografia 1:10 000 do Concelho de Arraiolos, área de 68.400 hectares.	2021-09-03	The USE Concept, Lda.	Câmara Municipal de Arraiolos	PT-TM06/ETRS89	MNT	1:10000
667	The USE Concept, Lda.	Levantamento topográfico de 34 ha para Plano de Urbanização na freguesia de Alcabedeche	2021-04-14	The USE Concept, Lda.	Mundiparque - Parques comerciais e de Lazer, S.A.	PT-TM06/ETRS89	CartTop	CartTop NdD1

DELIMITATION OF THE NATIONAL ECOLOGICAL RESERVE (REN)

developed by The USE Concept, Lda.

Delimitation of the National Ecological Reserve (REN).



Intervention area

Variable

Client

Private

Date

2020 - 2021

TOPOGRAPHIC SURVEY OF HOLM OAK AND CORK OAK TREES.

developed by The USE Concept, Lda.

Execution of topographic survey of holm oak and cork oak trees, by classical topography methods and using satellite imagery, conventional flight and drone, for the purposes of Environmental Impact Studies (EIA).



Intervention area

390.00 ha

Client

Private

Date

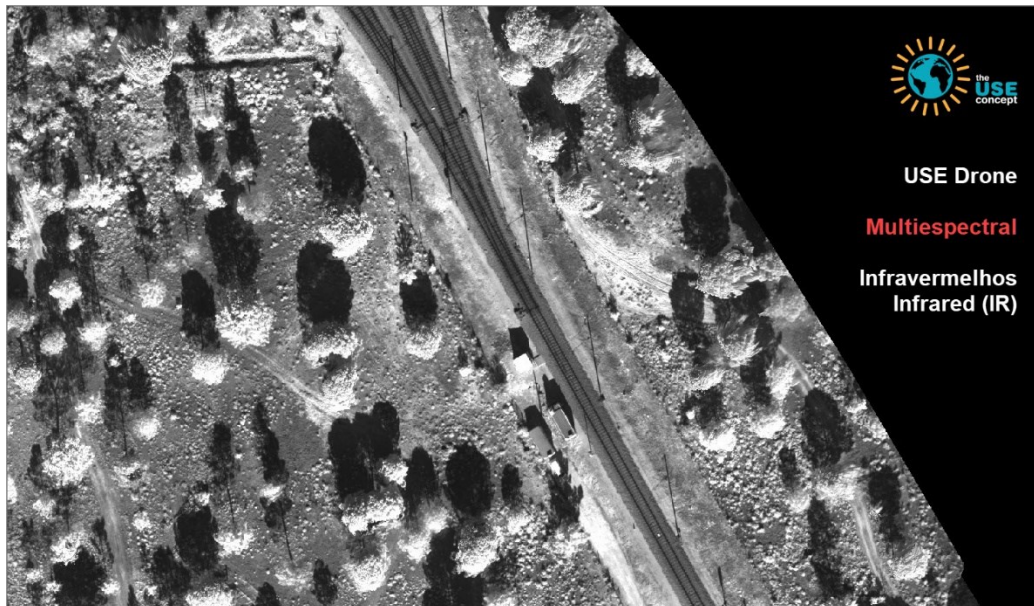
2020 | 2021 | 2023



TOPOGRAPHIC SURVEY OF HOLM OAK AND CORK OAK TREES.

developed by The USE Concept, Lda.

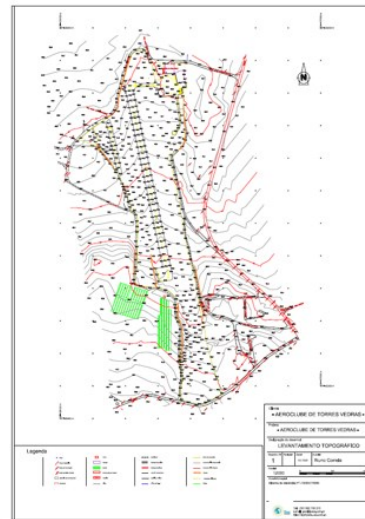
Intervention area



TOPOGRAPHIC SURVEY OF THE SANTA CRUZ AERODROME.

developed by The USE Concept, Lda.

Execution of topographic survey by classical topography methods and using drone.



Intervention area

200.00 ha

Client

Aeródromo de Santa Cruz

Date

2020

ELABORATION OF THEMATIC CARTOGRAPHY FOR THE LOCATION OF PHOTOVOLTAIC PLANTS.

developed by The USE Concept, Lda.

Execution of thematic cartography for the location of photovoltaic plants, for investment feasibility studies and submission of applications.



Intervention area

Variable

Client

Privates

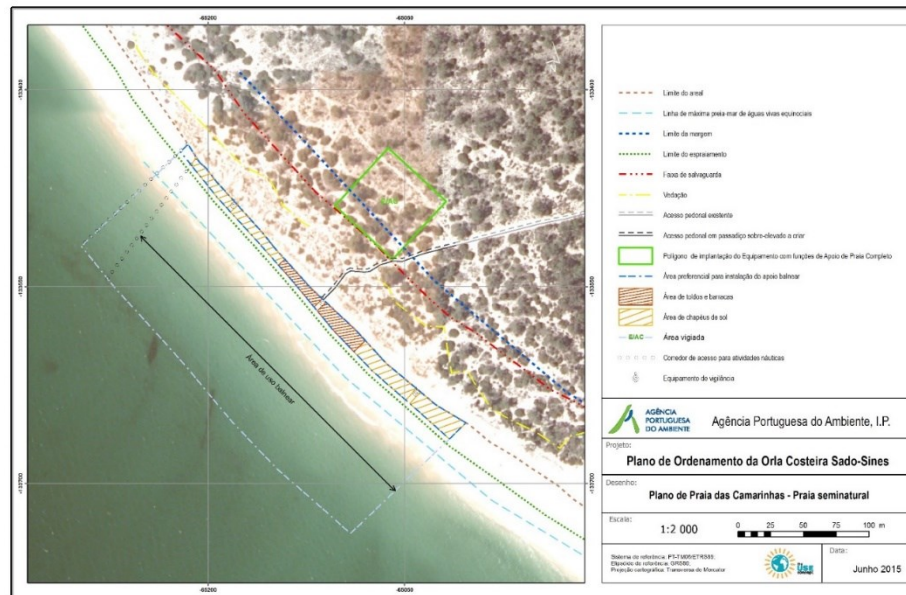
Date

2015 a 2021

ELABORATION OF THEMATIC CARTOGRAPHY FOR A BEACH PLAN.

developed by The USE Concept, Lda.

Execution of thematic cartography for the elaboration of beach plans, within the scope of the coastal management plans.



Intervention area

200.00 ha

Client

Agência Portuguesa do Ambiente, I.P.

Date

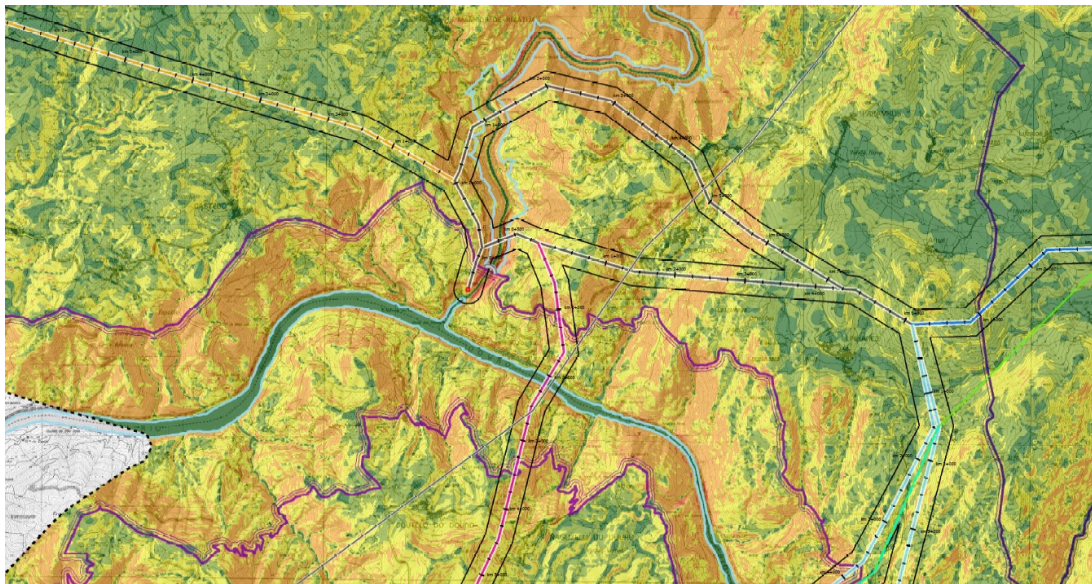
2015

ENVIRONMENTAL IMPACT STUDY OF THE CONNECTION TO THE NATIONAL ELECTRICITY TRANSMISSION GRID, AT 400 KV, OF THE FOZ TUA HYDROELECTRIC PLANT

developed by ECOBASE – Estudos e Soluções Sustentáveis, Lda. including at least one element of The USE Concept, Lda, to the Elaboration of GIS and cartography to support the preparation of the Environmental Impact Assessment (EIA).

This Environmental Impact Assessment (EIA) concerns the project for the Connection of the Foz Tua Hydroelectric Power Plant (AHFT) to the National Electricity Transmission Network - RNT(E), through a very high voltage overhead line (400 kV). As such, the project was designated as: "Connection to the National Electricity Transmission Network, at 400 kV, of the Foz Tua Hydroelectric Plant".

Its purpose is to transport the electricity produced in the AHFT. In other words, this power line is the link connecting the AHFT to the power grid, draining the electricity produced there.



Intervention area

100,000.00 ha

Client

EDP - Gestão da Produção de Energia, S.A.

Date

2013 | 2014

CLASSIFICATION OF SATELLITE IMAGES.

developed by The USE Concept, Lda.

This work consisted of the classification of satellite images, with local samples for the fine-tuning of the spectral signature, to aid in the execution/updating of the Geological Map of Angola.



Intervention area
Província de Luanda
Client
Private
Date
2013



Spatial Planning and Regional Development

Municipal Spatial Planning Plans

Geographic Information Systems

Network Analysis

Multicriteria Analysis

Geographic Databases

Thematic Cartography and Infographics

Surface Modeling

Digital Elevation Models

Decision Support Systems

Carbon Capture

Vector Topographic Cartography

Vector Topographic Mapping Execution

Approval of cartography with the Directorate-General for the Territory (DGT)

Topography & GPS

Unmanned Aerial Systems - UAS (aka Drone)

Architectural Studies and Projects

Modernization and Capacity Building

Process reengineering

Training Intervention Plans

The USE Concept, Lda.

Rua Padre Américo, 17-B
1600-548 Lisboa

(Headquarters) Rua Marechal Costa Gomes, 6 – 3.º C
2685-892 Sacavém

T (+351) 962 755 210

I use.com.pt

And geral@use.com.pt



The company The USE Concept, created in 2010, originally created and supported by the concept "Use Your Space", is a company with experience and positioning in the field of Geographic Information Systems, Cartography, Topography and Spatial Planning, providing a set of diversified services in these domains.

We focus on designing effective solutions tailored to specific needs, contributing to the growth and competitiveness of our clients.