

Revolutionize  
your business  
with the  
technology  
of tomorrow

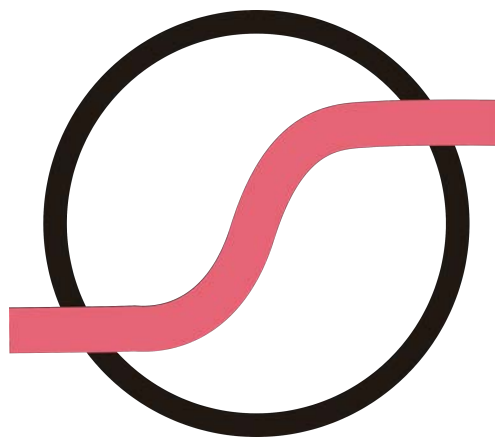


**LOGICMELT**  
EDGE & AI TECHNOLOGIES

# Who are we?

At Logicmelt we develop digitalization solutions for Industry 4.0, focusing on disruptive Artificial Intelligence and Edge Computing technologies.

We believe that these technologies have the ability to revolutionize the world we live in, improving the lives of all people. That is why our objective is to accelerate its application to real problems, becoming a bridge between the latest advances in research and the needs of society.



# We are your best partner for:

## ➔ Enter Industry 4.0



Learn from  
your process

Reduce errors



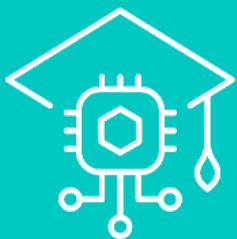
Increase  
productivity

## ➔ Develop your products

Connected devices



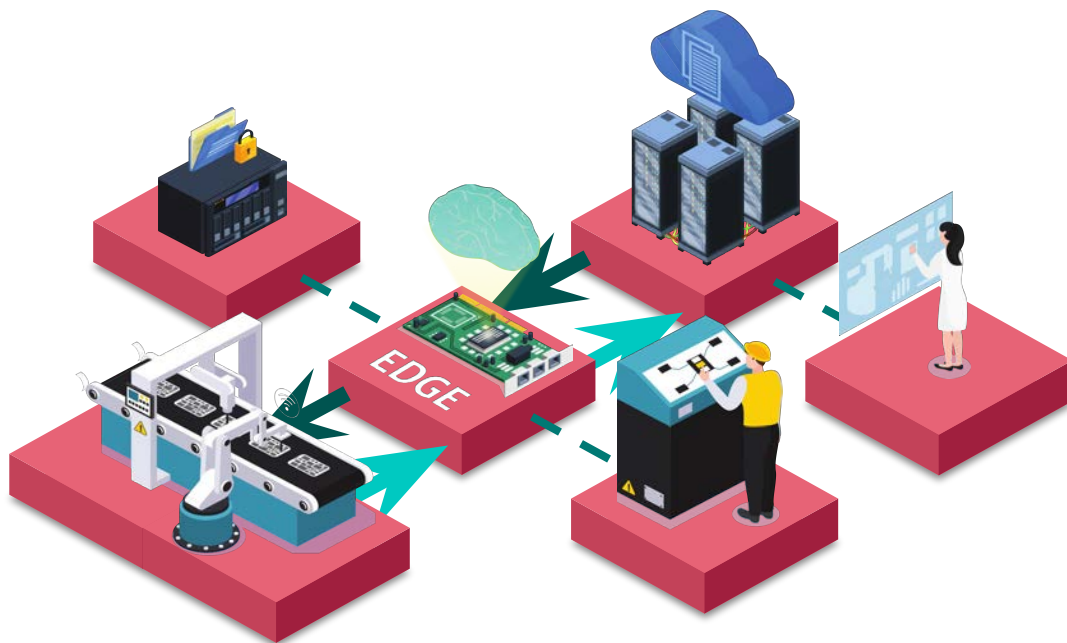
Intelligent products



# Tecnology

## Edge

Edge Computing is a paradigm of consisting of moving the computing power close to where the data is produced. In contrast to the trend of recent years, in which IoT devices sent data to the cloud to be processed, part of the processing moves to the IoT devices themselves, turning them into Edge devices. This trend made possible by the latest advances in embedded electronics.



## Advantages

- Better response times.
- Can work offline.
- More security and privacy.
- Less expense in infrastructure.

# Artificial Intelligence

Artificial Intelligence, or AI, it is a broad term that includes a set of algorithms that allow a computer to solve problems autonomously. Advances in recent years in the areas of Machine Learning and Deep Learning are revolutionizing practically all areas of society, including industry.

Currently AI is the only tool capable of extracting value from the large amounts of data that are captured in the industry, being of great help in production control, quality control, security and maintenance tasks, among many others.

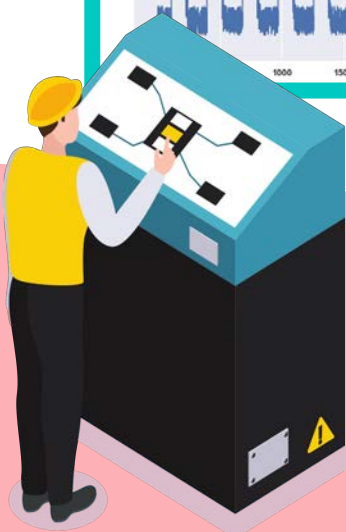
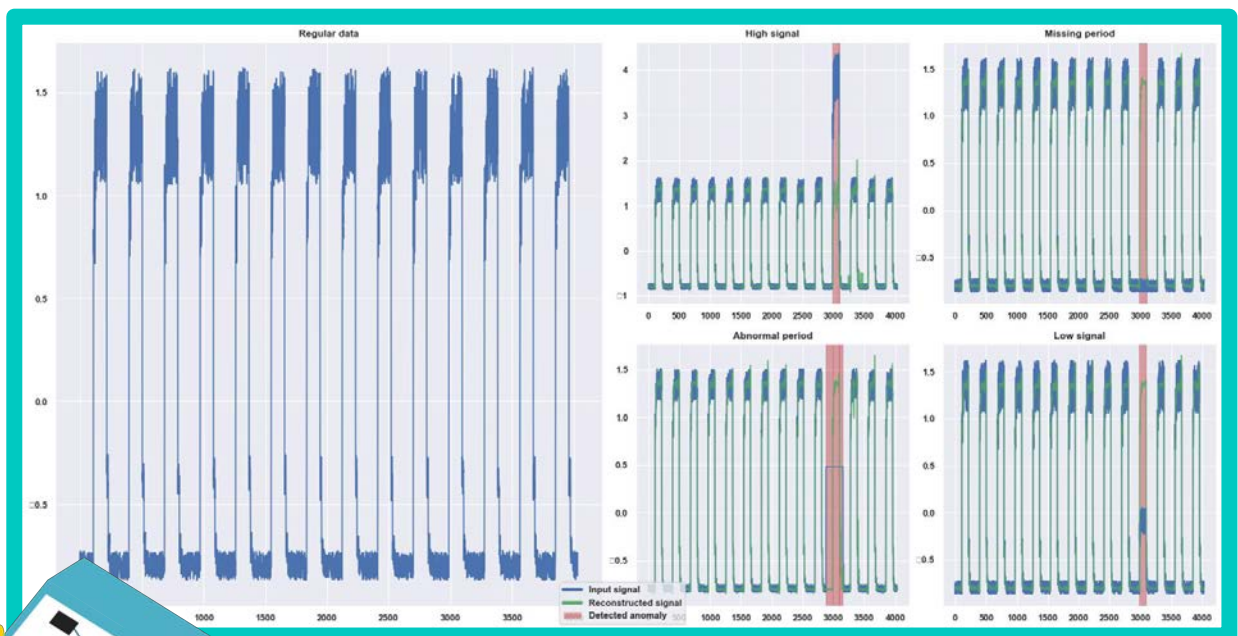
## Advantages

- ↳ **Learns autonomously from the data.**
- ↳ **Capable of solving complex problems very quickly.**
- ↳ **Improved performance over other algorithms.**
- ↳ **Surpass human performances in certain tasks.**

# Solutions

## Anomaly detection

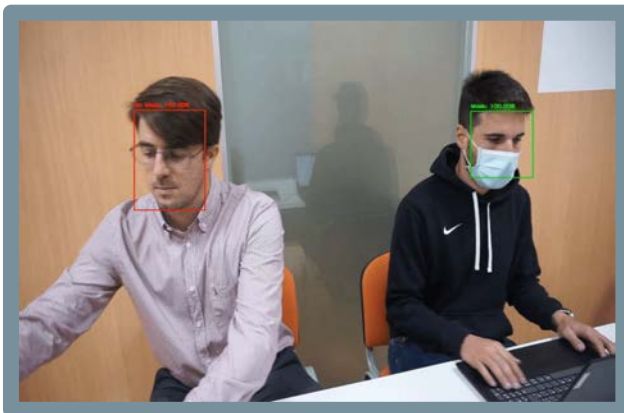
- Use of edge devices to sensorize the production line.
- Use of anomaly detection algorithms to identify deviations from nominal parameters.
- Offers metrics and alerts through dashboards and HMI.



**Your business at a glance.**

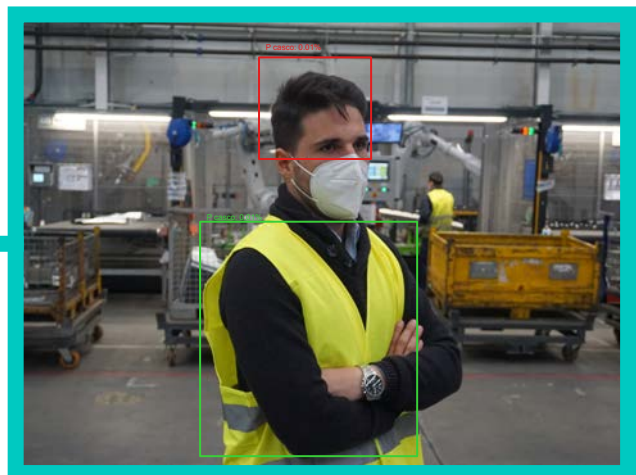
# Detection of use of PPE

- Use of cameras and edge devices to detect in real time the use of PPE by workers.
- Applicable to all types of PPE: helmets, safety clothing, etc.
- Alerts and notifications system as complements to prevention systems.



Use of masks  
in the office

Use of PPE in  
an industrial  
environments

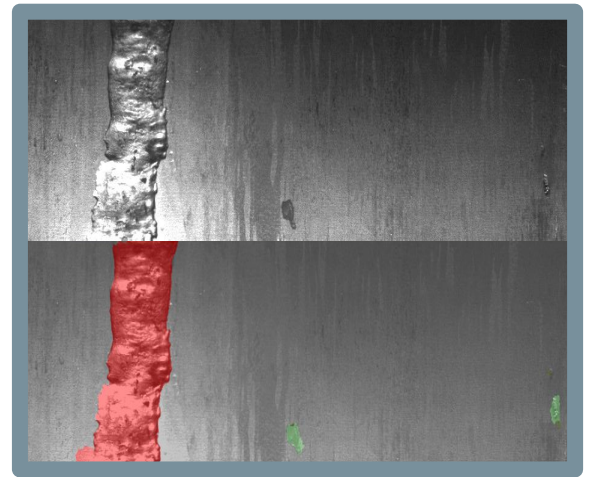


**The best protection  
for your workers**



## Visual inspection

- Use of cameras for the inspection of wood and metal parts.
- Use of AI algorithms for automatic defect detection
- Integration with production and traceability systems.

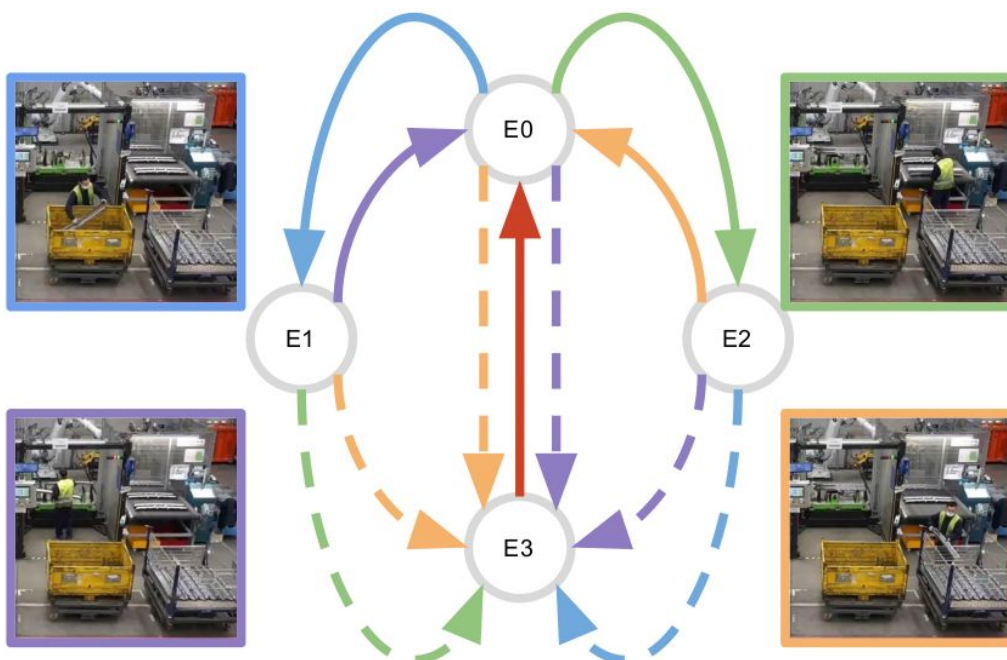


**Zero-defects  
production**



# Support for manual operations

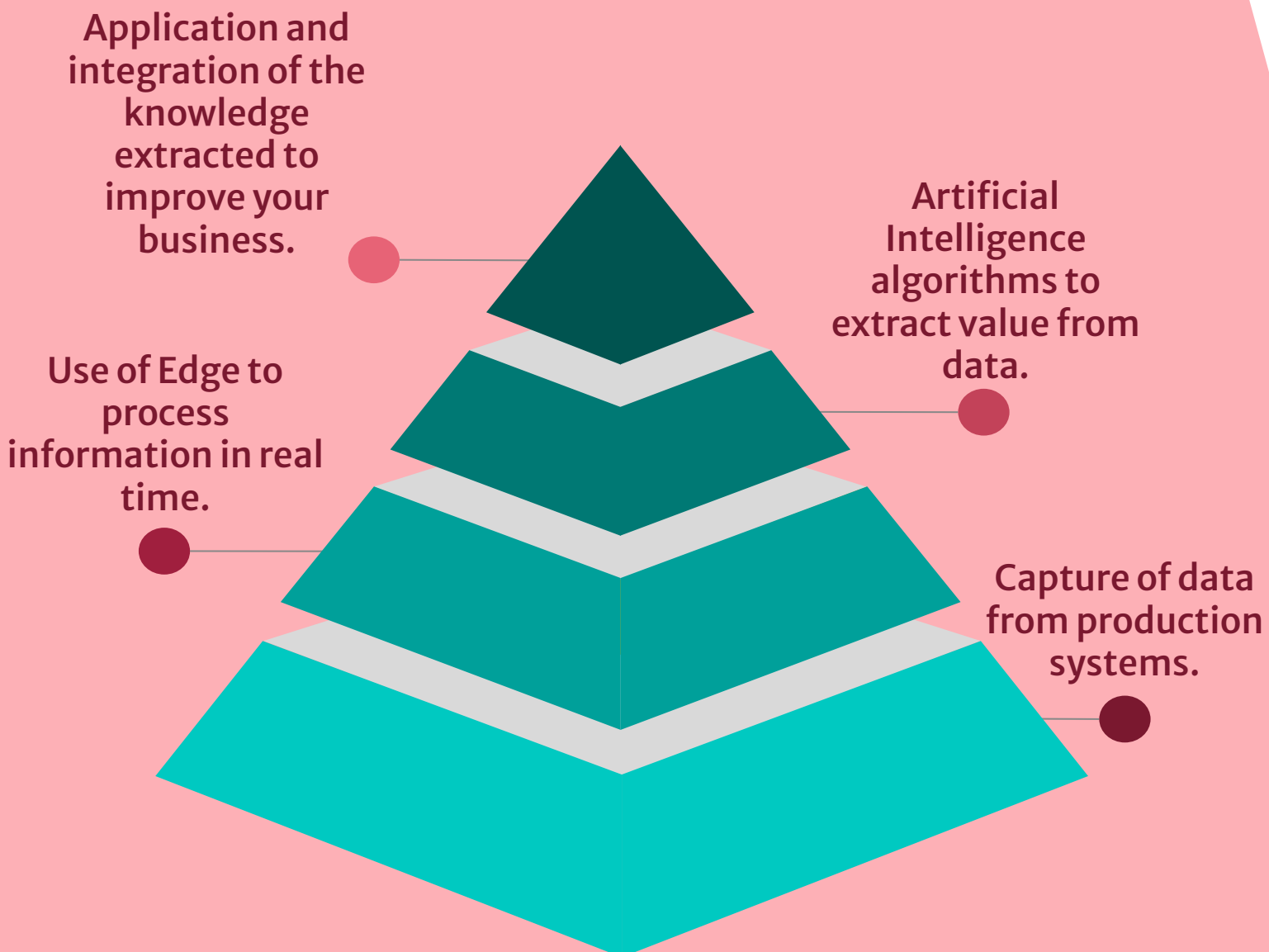
- Use of cameras and edge devices to identify sequences of manual operations.
- Support and alerts to operators in case of incorrect sequences in assembly, loading and unloading operations, etc.
- Savings by preventing production defects from spreading.



**The best  
worker support**

# Our services

We vertically integrate  
all Industry 4.0  
services



# AI

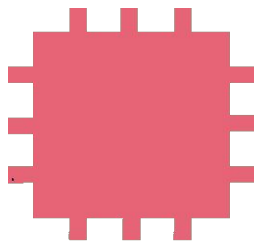
## **On demand AI algorithms**

Extract hidden information from data to better understand your production process and reduce costs.



## **Data capture and control**

Digitize your production process with our data capture systems and perform optimal process control using AI.



## **Edge Computing**

Execute AI algorithms locally in real time thanks to our Edge computing devices.



## **Cloud Connectivity**

Send data to the cloud securely and combine it with Edge technology to save cloud costs and increase security.

# CRAFTERS OF THE DIGITAL AGE



[www.logicmelt.com](http://www.logicmelt.com)



[logicmelt@logicmelt.com](mailto:logicmelt@logicmelt.com)



[logicmelt](https://www.linkedin.com/company/logicmelt)



## Acknowledgments:



IEBT

nº 66/340/2020/iebt

XUNTA DE GALICIA  
CONSELLERÍA DE ECONOMÍA,  
EMPREGO E INDUSTRIA

Universidade de Vigo  
Incubi Avanza

**DIHGIGAL**  
DIGITAL INNOVATION HUB INDUSTRIAL DE GALICIA



INCEPTION  
PROGRAM



Business Factory Auto