

Democratised AI

for

Industrial Vision

April 2023

 **inovako**



maximise
quality & productivity
on the shopfloor

Who are we?

> *About us*

We are Inovako

- We are a deep-tech startup, providing AI and computer vision based industrial quality inspection solutions,
- Established in January 2018,
- Based in;
 - Istanbul (Turkey),
 - Vitoria-Gasteiz (Spain),
 - Madrid (Spain),
- Supported by;
 - SPRI, BIC Araba (Spain),
 - Diputación Foral De Álava (Spain),
 - Tübitak (Turkey),
 - TEB (BNP Paribas Bank in Turkey),

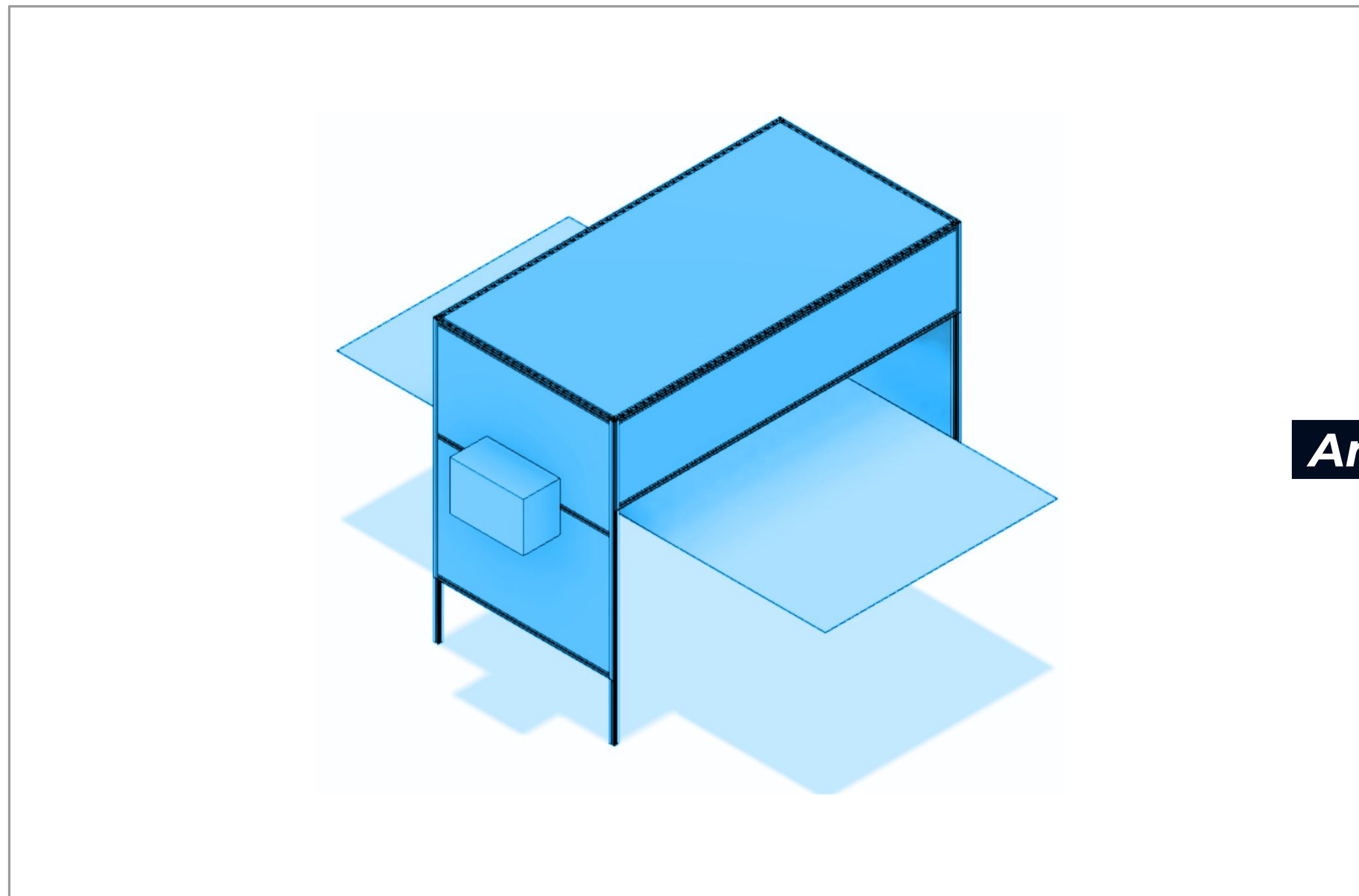


Who are we?

> *About us*

We provide a two-pronged approach: We either manufacture industrial inspection equipment or offer a platform for creating such equipment.

1) We build and integrate cutting-edge vision-AI inspection machines



2) We provide our platform DeepMaster for inhouse vision-AI inspection machine building

DeepMaster

And/Or

"DeepMaster is referred to as the IKEA™ of industrial inspection machines. It allows both end-users and system integrators to create, construct and incorporate state-of-the-art inspection machines utilizing AI technology, independently, without relying on external developers or integrators, including Inovako."

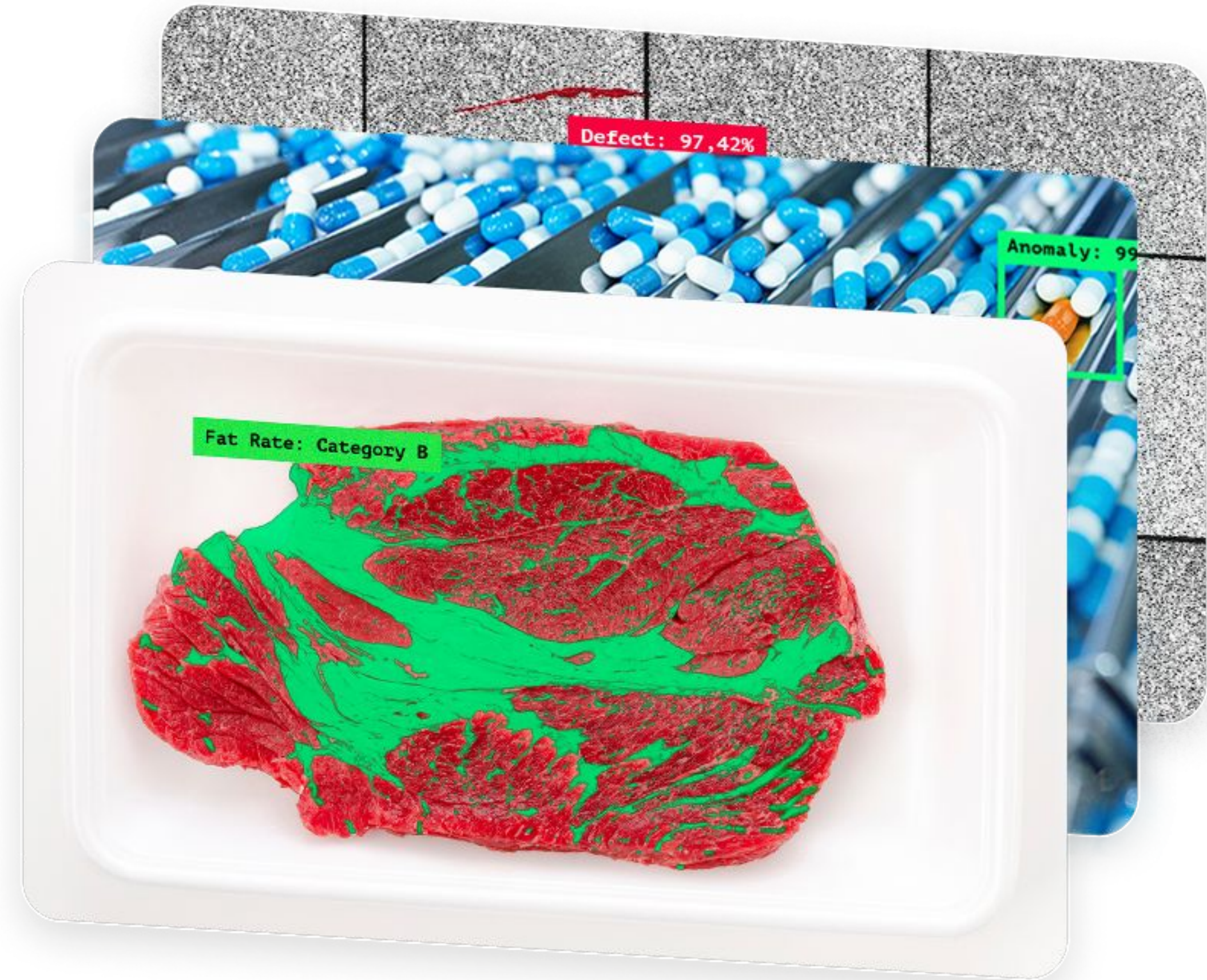
Who are we?

> *About us*

DeepMaster

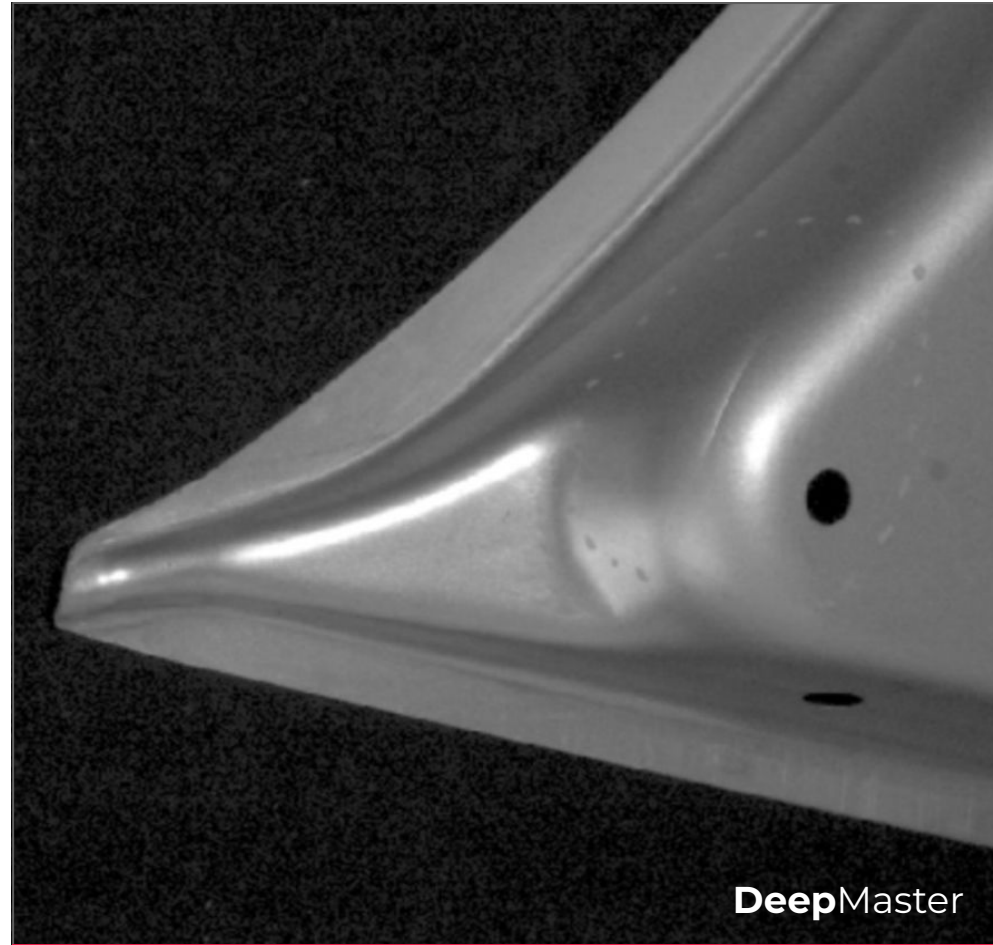
Accelerating AI across all industries

DeepMaster, our AI development platform and library, specifically tailored for Industry 4.0, offers a no-code vision solution for creating high-quality audit applications with remarkable ease and simplicity, requiring only a few clicks.



Success Stories

> *Industrial vision-AI solutions on the shopfloor*



Pressed Sheet Metal Inspection

Detection of cracks, necking, breaks, wrinkles and scratches on the pressed sheet metal parts.

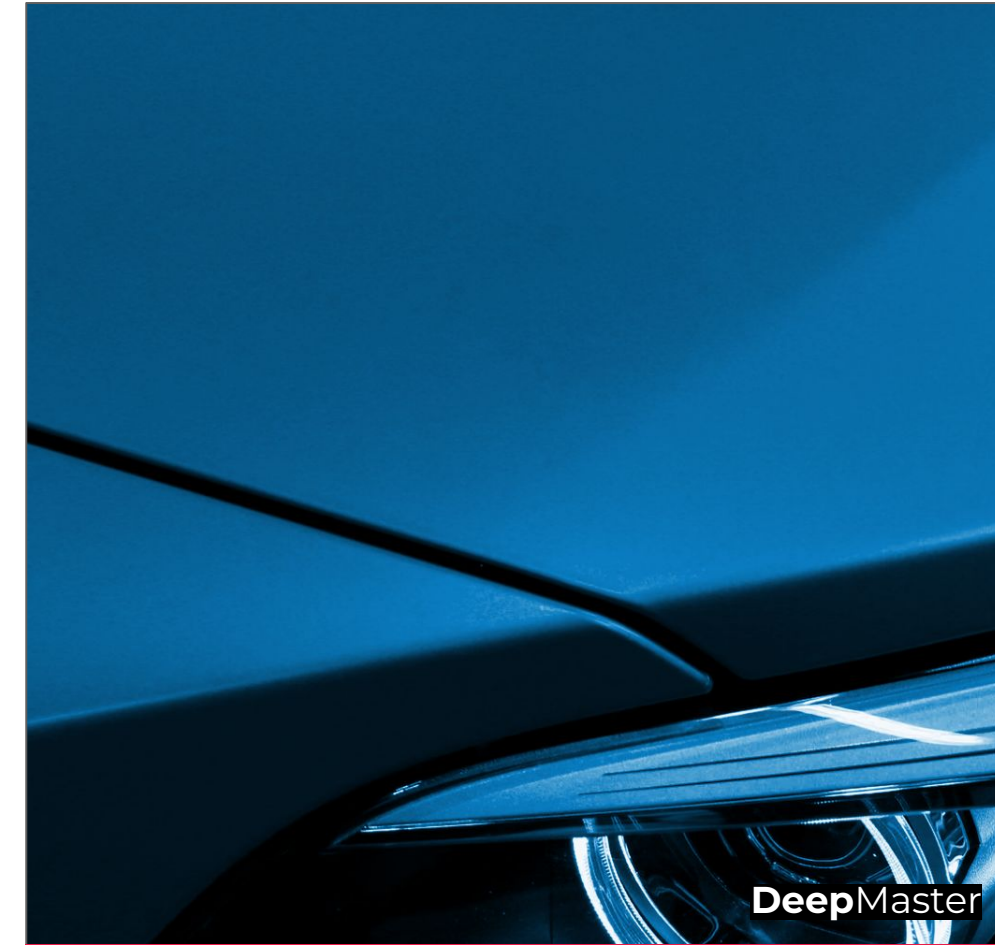
Client:



Glossy /Chrome Surface Inspection

Inovako's Lumitec to detect defects such as scratches, pinholes, orange peel surface on the chrome coated parts.

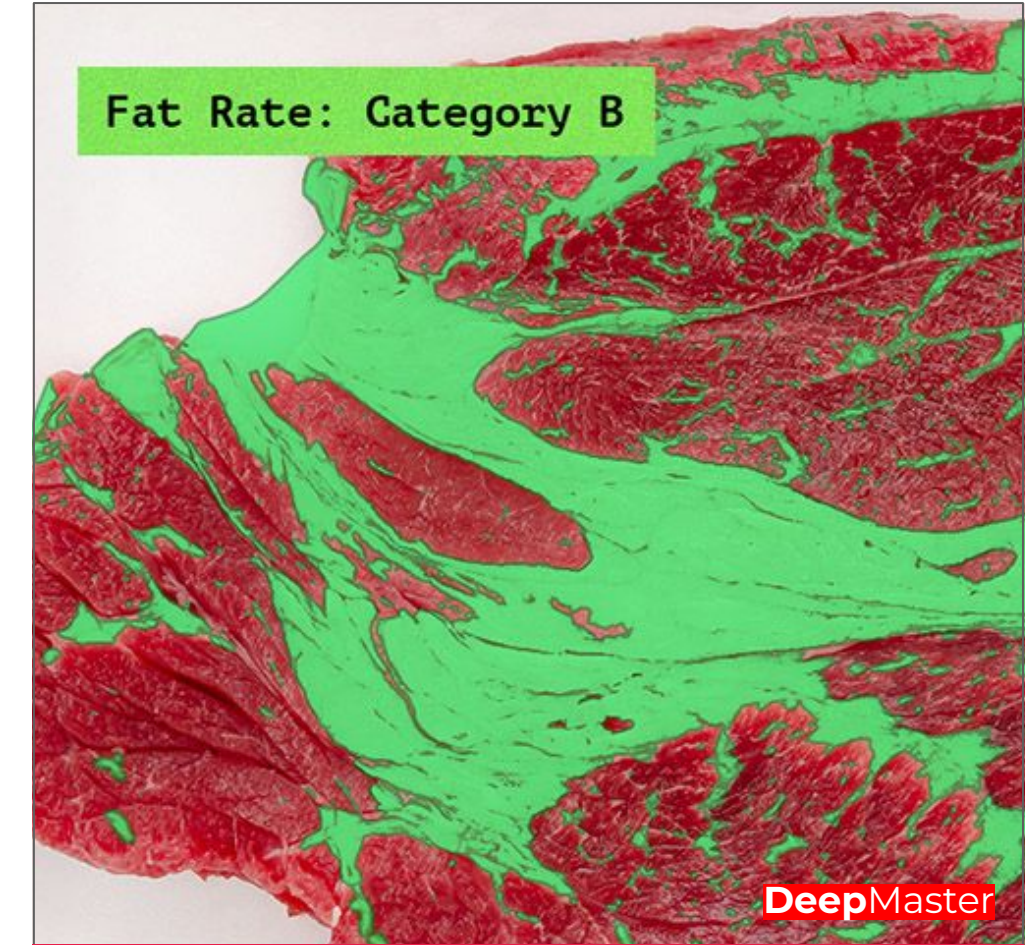
Client:



Painted Car Body/Part Inspection

Inovako's Lumitec to detect defects such as scratches, pinholes, orange peel surface on the painted surface.

Client:



Meat Fat Rate Detection

Detection the fat sections on meat products and prodgeneration of a fat-rate grade output has been achieved by DeepMaster.

Client:

A supermarket chain in Turkey
(name cannot be shared acc. to the confidential restrictions)

Success Stories

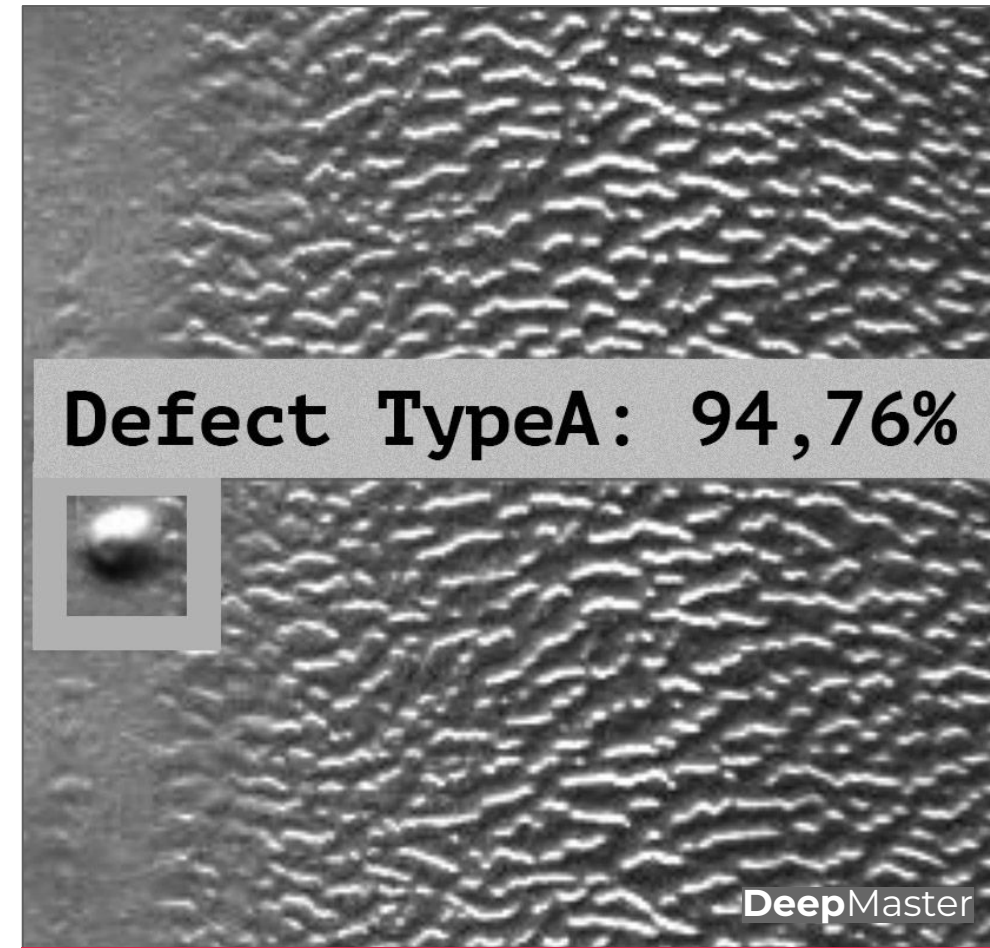
> *Industrial vision-AI solutions on the shopfloor*



Glass Inspection

Inovako's GlassChecker to detect production defects such as air bubbles, scratches, inclusions, coating defects on glass products.

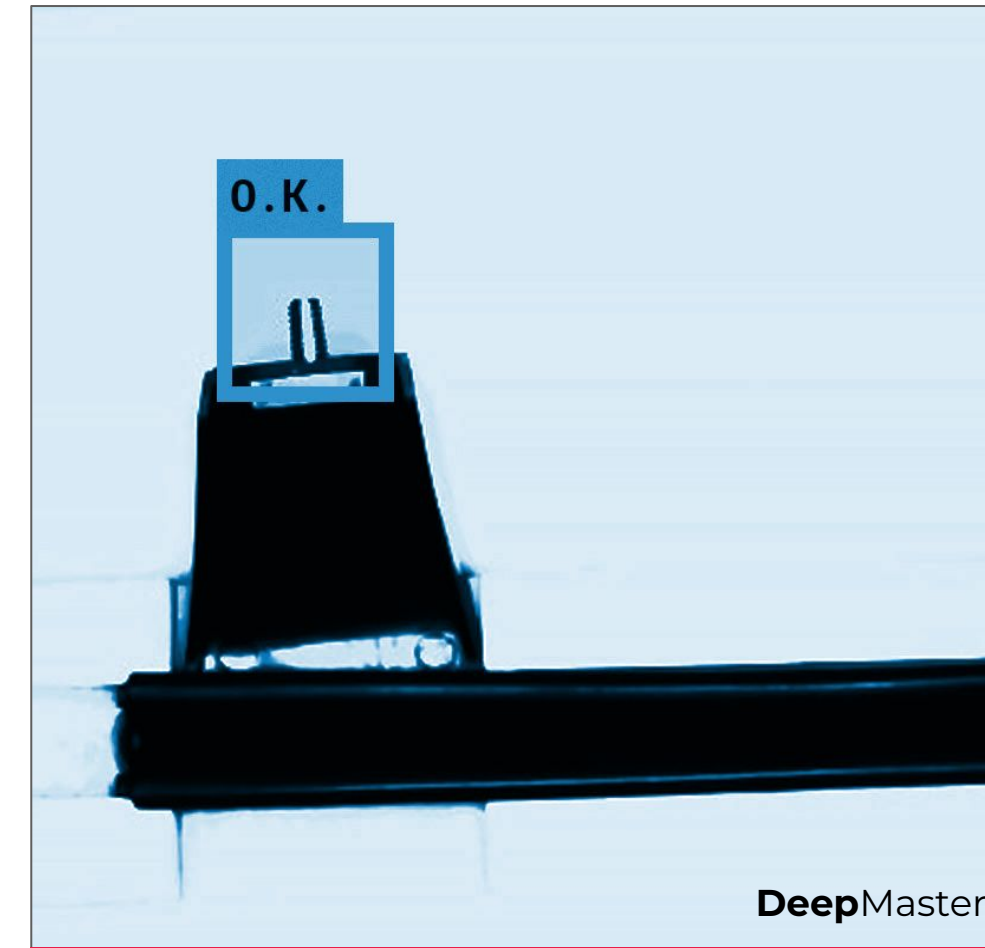
Client:



Textured Surface Inspection

DeepMaster to detect the defects on the noisy surface of textured parts, such as decorative plastic parts, EPDM/TPV sealings, etc.

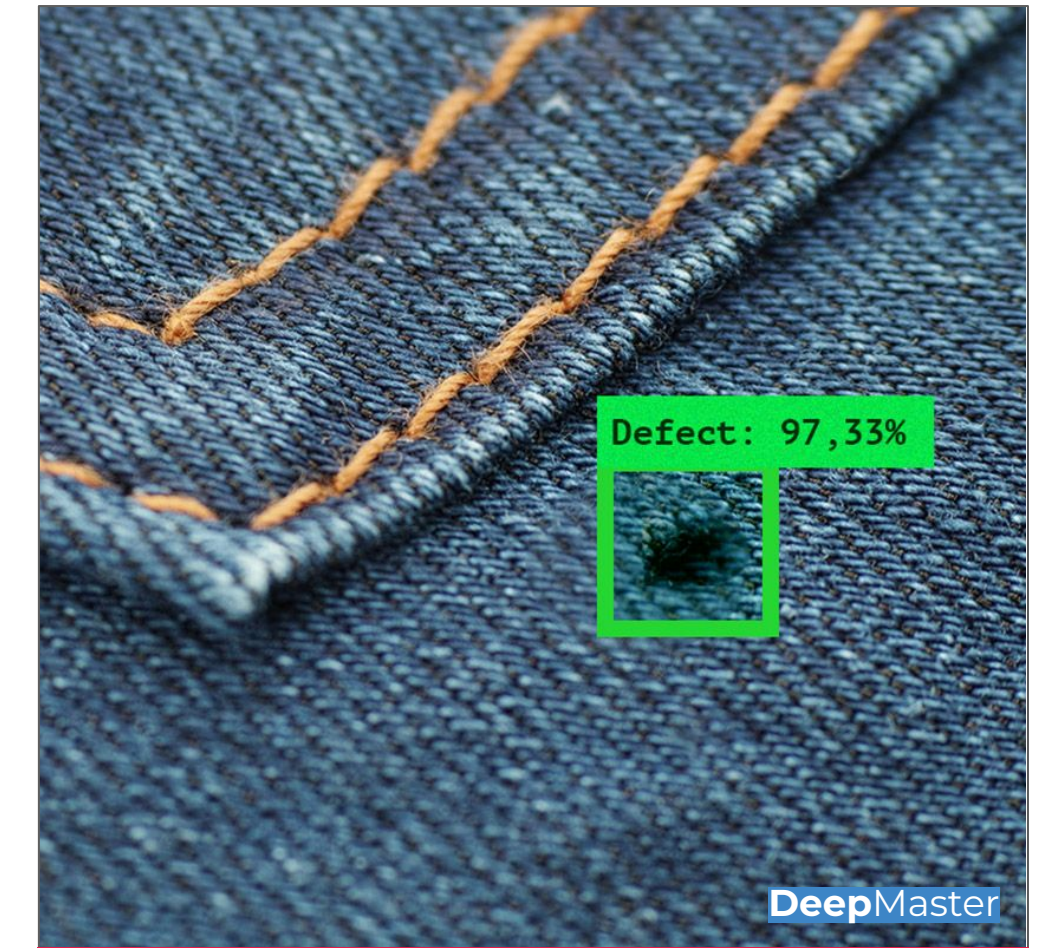
Client:



Sub-Component Presence Control

Sub-component presence control applications for assembly lines are easy to deploy by DeepMaster.

Client:



Denim Inspection

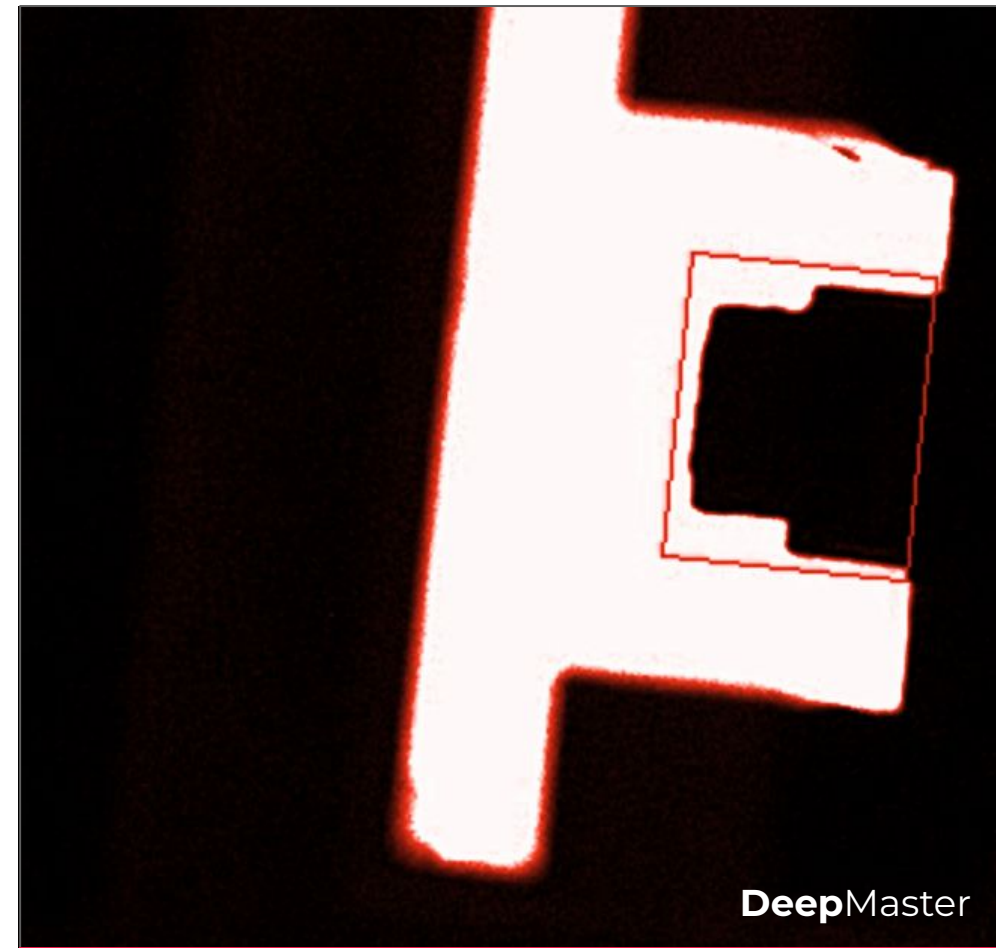
Detection of defects on denim products, related size calculations and discrimination of defects by DeepMaster.

Client:

Textile fabric manufacturer in Turkey
(name cannot be shared acc. to the confidential restrictions)

Success Stories

> *Industrial vision-AI solutions on the shopfloor*

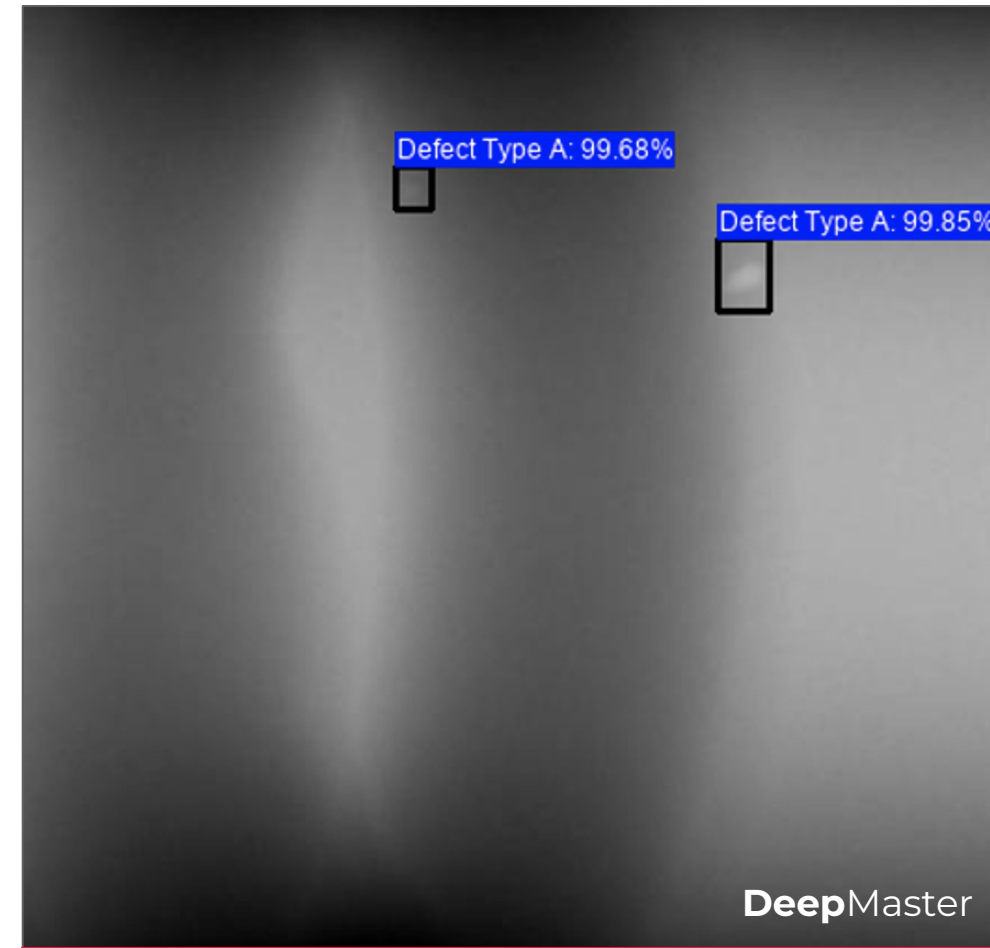


DeepMaster

Sub-Component Presence Control

Sub-component presence control by DeepMaster for plastic injected B-Pillar GRC automotive parts.

Client:

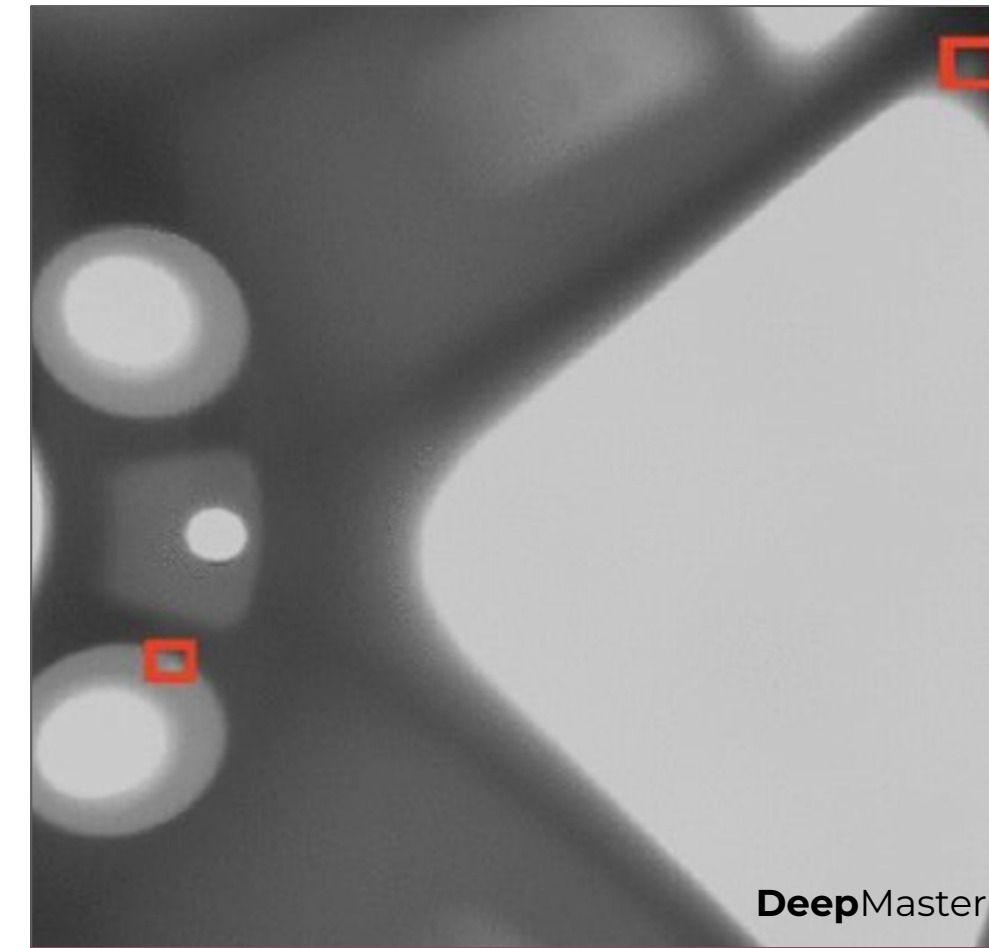


DeepMaster

Welding X-Ray Inspection

DeepMaster to develop a decision support system to for defect detection on welding X-Ray images of steel pipes for petrol delivery.

Client:



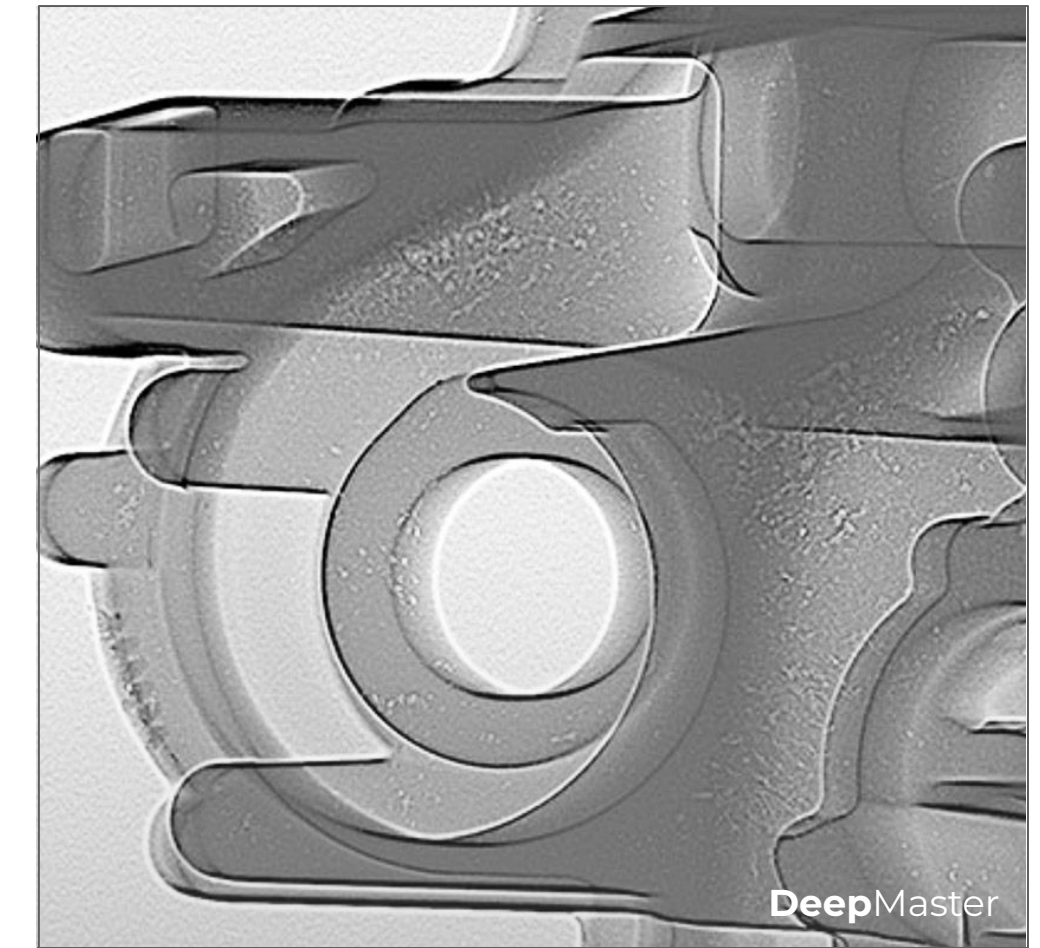
DeepMaster

Rim X-Ray Inspection

DeepMaster to detect production defects cracks,, lack of fill, porosity and spatter on X-Ray images of automotive rim parts.

Client:

Automotive tier-1 level supplier in Turkey
(name cannot be shared acc. to the confidential restrictions)



DeepMaster

Knuckle X-Ray Inspection

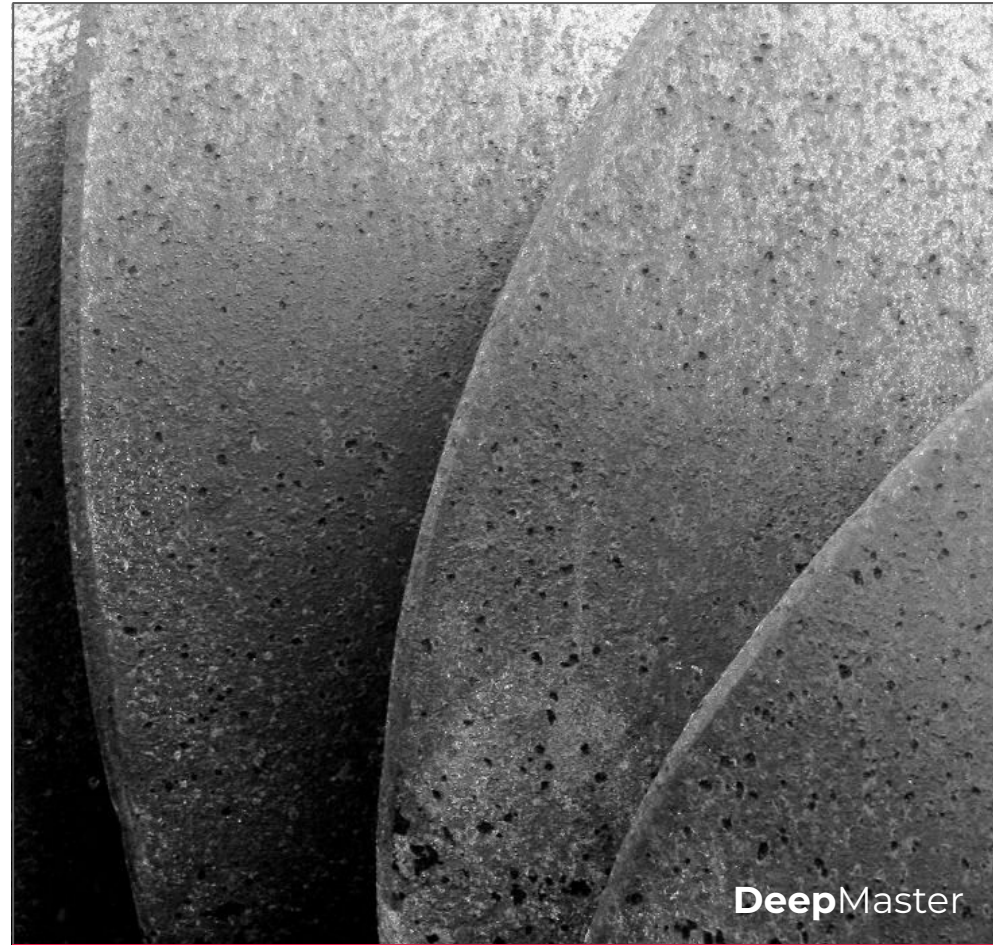
DeepMaster to detect production defects cracks,, lack of fill, porosity and spatter on X-Ray images of automotive knuckle parts.

Client:

Automotive tier-1 level supplier in Spain
(name cannot be shared acc. to the confidential restrictions)

Success Stories

> *Industrial vision-AI solutions on the shopfloor*



Borescope Image Analysis

Surface inspection and quality grading of inner spaces of critical aircraft components.

Client:

Maintenance unit of an int. airlines company
(name cannot be shared acc. to the confidential restrictions)



Jet Engine Sub-Component Presence Control

Sub-component presence control by DeepMaster for aircraft jet engine.

Client:

Maintenance unit of an int. airlines company
(name cannot be shared acc. to the confidential restrictions)



Grading of Over-Injection on Metal Nuts

DeepMaster to grade over-injection quality (via deep learning) of the plastic parts with metal nuts.

Client:

Automotive tier-1 level supplier in Turkey
(name cannot be shared acc. to the confidential restrictions)



Glossy Surface Inspection

Inovako's Lumitec to detect defects such as scratches, pinholes, orange peel surface on glossy plastic-injected automotive parts.

Client:

Automotive tier-1 / tier-2 level supplier in Spain
(name cannot be shared acc. to the confidential restrictions)

Thank you !

Emin Ekşi

Managing Director

BIC Araba, Vitoria-Gasteiz, Álava, Spain

+34 677 973 098

eeeksi@inovako.com

 **inovako**